

## Product datasheet for **CS600807**

### Frozen Tissue Sections, Myometrium

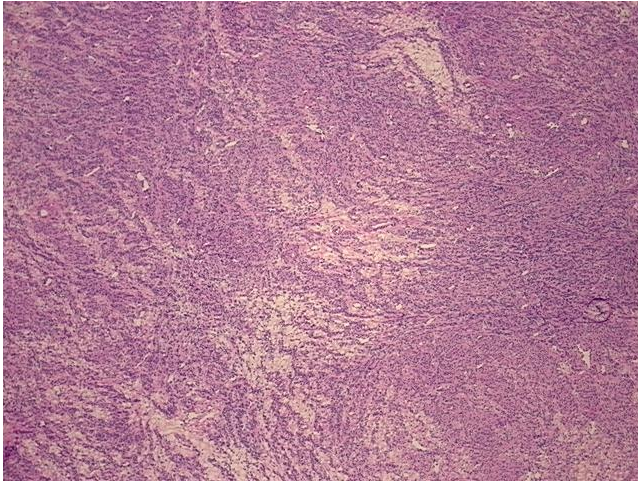
#### Product data:

Product Type:	Frozen Sections
Disease State:	Other Disease
Diagnosis Category:	Uterine Fibroids
Tissue:	Myometrium
Frozen Sample ID:	FR00000AF0
Case ID:	CU0000000302
Tissue of Origin:	Myometrium
Site of Finding:	Myometrium
Appearance:	T
Sample Diagnosis (from Pathology Verification):	Leiomyoma of myometrium
Normal:	5%
Lesional:	0%
Tumor:	95%
Tumor Hypo/Acellular Stroma:	0%
Tumor Hypercellular Stroma:	0%
Necrosis:	0%
CASE Diagnosis (from medical center path report):	Leiomyoma of myometrium
Age:	55
Gender:	Female
Tumor Grade:	Not Reported
Minimum Stage Grouping:	Not Reported

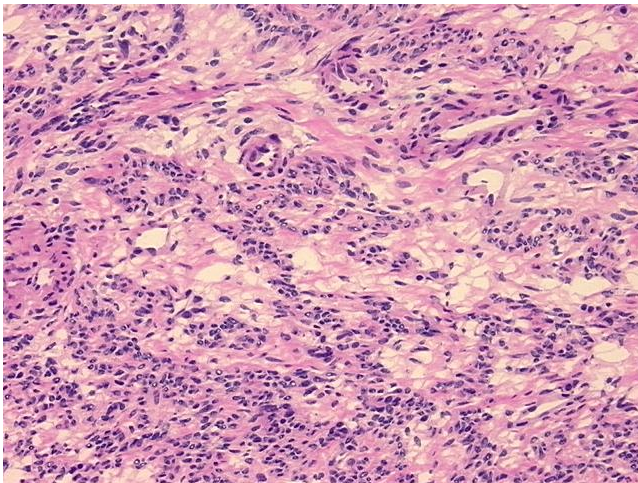


[View online »](#)

T (Extent of Primary Tumor):	Not Reported
N (Lymph node metastasis):	Not Reported
M (Distant metastasis):	Not Reported
Storage:	Store frozen tissue sections at -80°C.
Stability:	All frozen tissue sections are stable for 1 year from date of purchase if stored at -80°C without repeated freeze/thaws.

**Product images:**

4x Image



20x Image