

Product datasheet for **CS600794**

Frozen Tissue Sections, Lung

Product data:

Product Type:	Frozen Sections
Disease State:	Other Disease
Diagnosis Category:	Fibrosis
Tissue:	Lung
Frozen Sample ID:	FR00000ACF
Case ID:	CU0000000300
Tissue of Origin:	Lung
Site of Finding:	Lung
Appearance:	L
Sample Diagnosis (from Pathology Verification):	Fibrosis
Normal:	0%
Lesional:	100%
Tumor:	0%
Tumor Hypo/Acellular Stroma:	0%
Tumor Hypercellular Stroma:	0%
Necrosis:	0%
Pathology Verification notes from H&E review:	0% Alveoli, 100% Bronchioles and fibrous stroma; Extensive fibrosis and chronic inflammation present
CASE Diagnosis (from medical center path report):	Adenocarcinoma of lung, bronchioloalveolar
Age:	41
Gender:	Female
Tumor Grade:	Not Reported



[View online »](#)

Minimum Stage Grouping: IA

T (Extent of Primary Tumor): T1

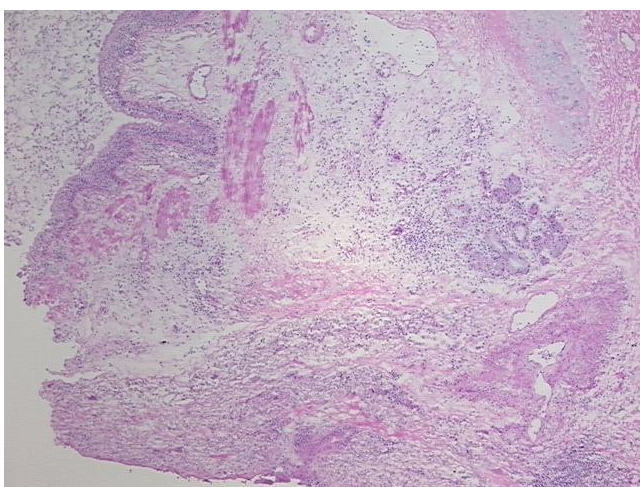
N (Lymph node metastasis): N0

M (Distant metastasis): MX

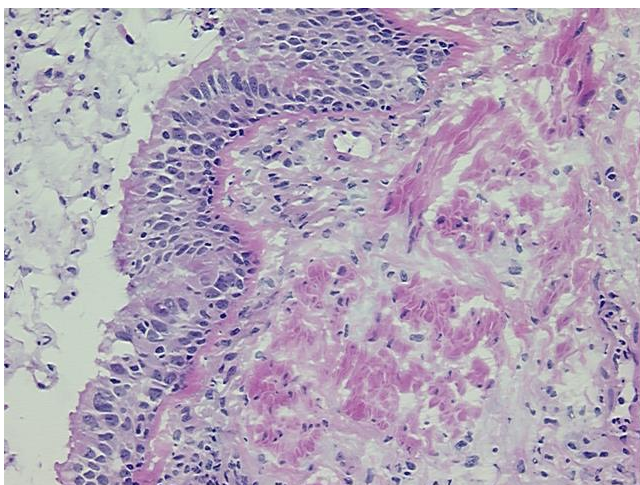
Storage: Store frozen tissue sections at -80°C.

Stability: All frozen tissue sections are stable for 1 year from date of purchase if stored at -80°C without repeated freeze/thaws.

Product images:



4x Image



20x Image