

Product datasheet for **CS600790**

Frozen Tissue Sections, Lung

Product data:

Product Type:	Frozen Sections
Disease State:	Cancer
Diagnosis Category:	Lung Cancer
Tissue:	Lung
Frozen Sample ID:	FR00000ACA
Case ID:	CU00000000300
Tissue of Origin:	Lung
Site of Finding:	Lung
Appearance:	T
Sample Diagnosis (from Pathology Verification):	Carcinoma of lung, bronchioloalveolar, non-mucinous
Normal:	73%
Lesional:	0%
Tumor:	25%
Tumor Hypo/Acellular Stroma:	0%
Tumor Hypercellular Stroma:	2%
Necrosis:	0%
Pathology Verification notes from H&E review:	Non Tumor Structures: 100% Alveoli
CASE Diagnosis (from medical center path report):	Adenocarcinoma of lung, bronchioloalveolar
Age:	41
Gender:	Female
Tumor Grade:	Not Reported


[View online »](#)

Minimum Stage Grouping: IA

T (Extent of Primary Tumor): T1

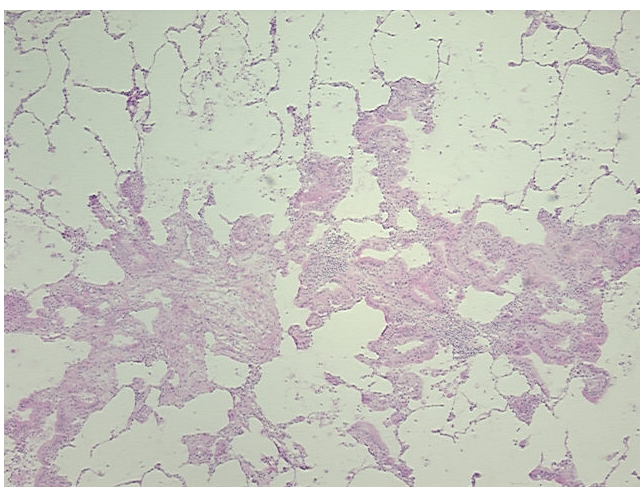
N (Lymph node metastasis): N0

M (Distant metastasis): MX

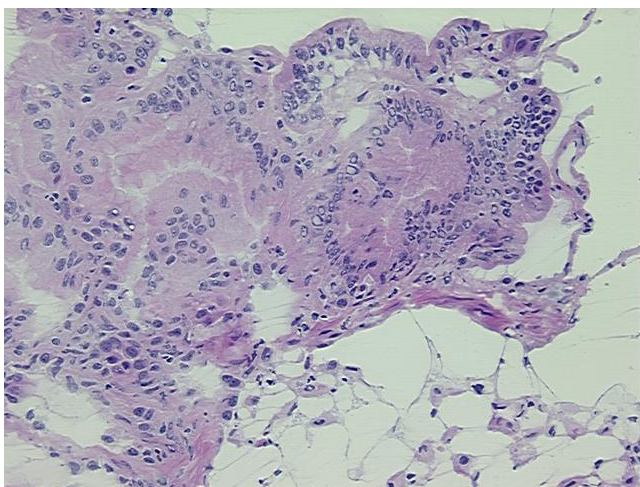
Storage: Store frozen tissue sections at -80°C.

Stability: All frozen tissue sections are stable for 1 year from date of purchase if stored at -80°C without repeated freeze/thaws.

Product images:



4x Image



20x Image