

## Product datasheet for **CS600786**

### Frozen Tissue Sections, Nose

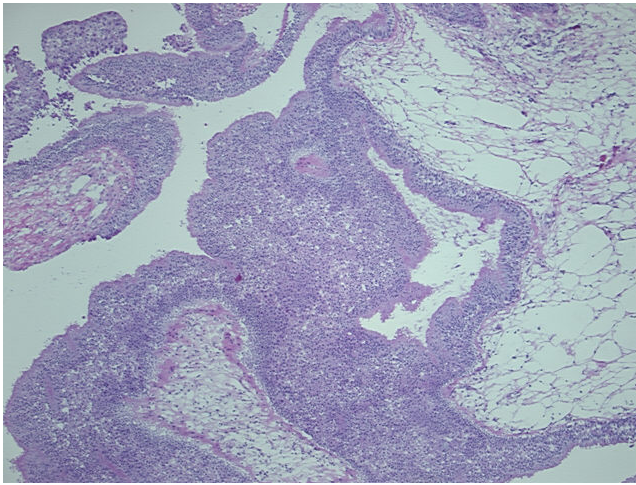
#### Product data:

Product Type:	Frozen Sections
Disease State:	Other Disease
Diagnosis Category:	Benign Tumors
Tissue:	Nose
Frozen Sample ID:	FR00000ABF
Case ID:	CU0000000298
Tissue of Origin:	Nose
Site of Finding:	Nose
Appearance:	T
Sample Diagnosis (from Pathology Verification):	Papilloma of nose, schneiderian
Normal:	0%
Lesional:	0%
Tumor:	90%
Tumor Hypo/Acellular Stroma:	0%
Tumor Hypercellular Stroma:	10%
Necrosis:	0%
Pathology Verification notes from H&E review:	Tumor: inverted type; Other Features/Comments: 70% Schneiderian mucosa, 30% Submucosa
CASE Diagnosis (from medical center path report):	Papilloma of nose, schneiderian
Age:	75
Gender:	Male
Tumor Grade:	Not Reported

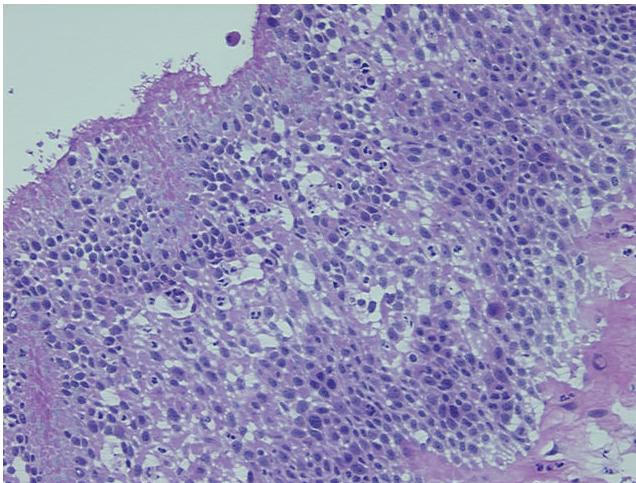


[View online »](#)

Minimum Stage Grouping:	Not Reported
T (Extent of Primary Tumor):	Not Reported
N (Lymph node metastasis):	Not Reported
M (Distant metastasis):	Not Reported
Storage:	Store frozen tissue sections at -80°C.
Stability:	All frozen tissue sections are stable for 1 year from date of purchase if stored at -80°C without repeated freeze/thaws.

**Product images:**

4x Image



20x Image