

## Product datasheet for **CS600641**

### Frozen Tissue Sections, Brain

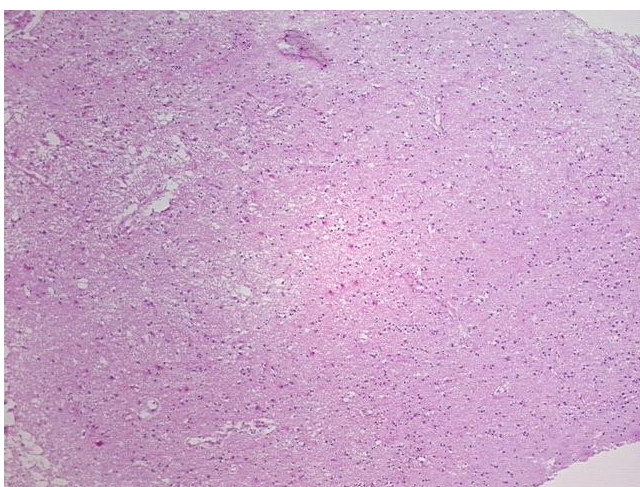
#### Product data:

Product Type:	Frozen Sections
Disease State:	Other Disease
Diagnosis Category:	Gliosis
Tissue:	Brain
Frozen Sample ID:	FR00000940
Case ID:	CU0000000244
Tissue of Origin:	Brain
Site of Finding:	Brain
Appearance:	L
Sample Diagnosis (from Pathology Verification):	Gliosis
Normal:	0%
Lesional:	35%
Tumor:	0%
Tumor Hypo/Acellular Stroma:	0%
Tumor Hypercellular Stroma:	0%
Necrosis:	65%
Pathology Verification notes from H&E review:	Reactive gliosis present
CASE Diagnosis (from medical center path report):	Glioblastoma multiforme
Age:	60
Gender:	Male
Tumor Grade:	WHO Grade IV

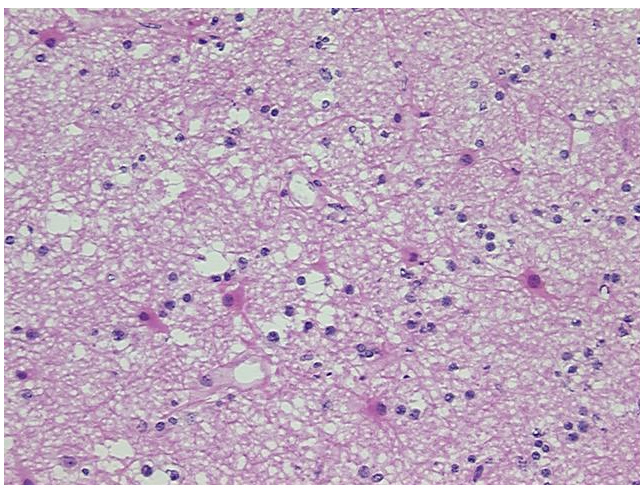


[View online »](#)

Minimum Stage Grouping:	Not Reported
T (Extent of Primary Tumor):	Not Reported
N (Lymph node metastasis):	Not Reported
M (Distant metastasis):	Not Reported
Storage:	Store frozen tissue sections at -80°C.
Stability:	All frozen tissue sections are stable for 1 year from date of purchase if stored at -80°C without repeated freeze/thaws.

**Product images:**

4x Image



20x Image