

Product datasheet for **CS600640**

Frozen Tissue Sections, Brain

Product data:

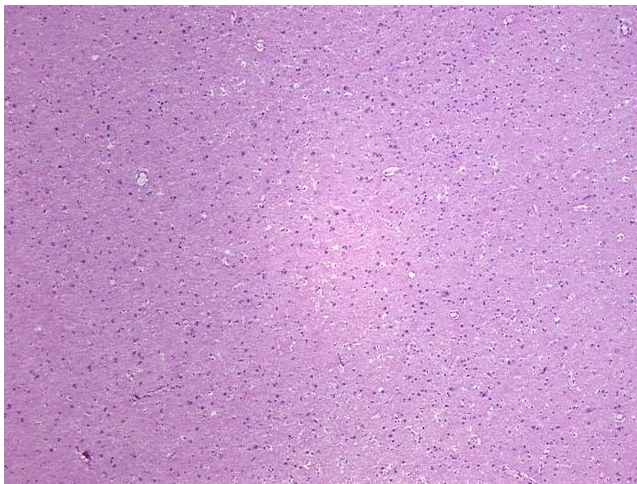
Product Type:	Frozen Sections
Disease State:	Other Disease
Diagnosis Category:	Gliosis
Tissue:	Brain
Frozen Sample ID:	FR0000093D
Case ID:	CU0000000244
Tissue of Origin:	Brain
Site of Finding:	Brain
Appearance:	L
Sample Diagnosis (from Pathology Verification):	Gliosis
Normal:	0%
Lesional:	50%
Tumor:	0%
Tumor Hypo/Acellular Stroma:	0%
Tumor Hypercellular Stroma:	0%
Necrosis:	50%
Pathology Verification notes from H&E review:	No viable tumor present; Reactive gliosis and prominent angiogenesis present; Contains 50% necrosis
CASE Diagnosis (from medical center path report):	Glioblastoma multiforme
Age:	60
Gender:	Male
Tumor Grade:	WHO Grade IV



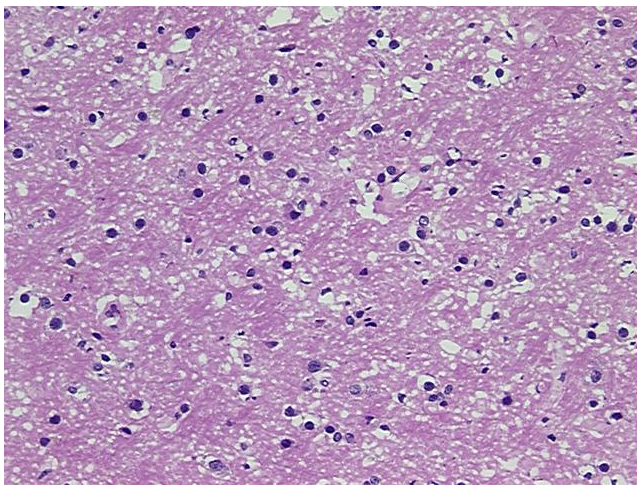
[View online »](#)

Minimum Stage Grouping:	Not Reported
T (Extent of Primary Tumor):	Not Reported
N (Lymph node metastasis):	Not Reported
M (Distant metastasis):	Not Reported
Storage:	Store frozen tissue sections at -80°C.
Stability:	All frozen tissue sections are stable for 1 year from date of purchase if stored at -80°C without repeated freeze/thaws.

Product images:



4x Image



20x Image