

Product datasheet for **CS600601**

Frozen Tissue Sections, Myometrium

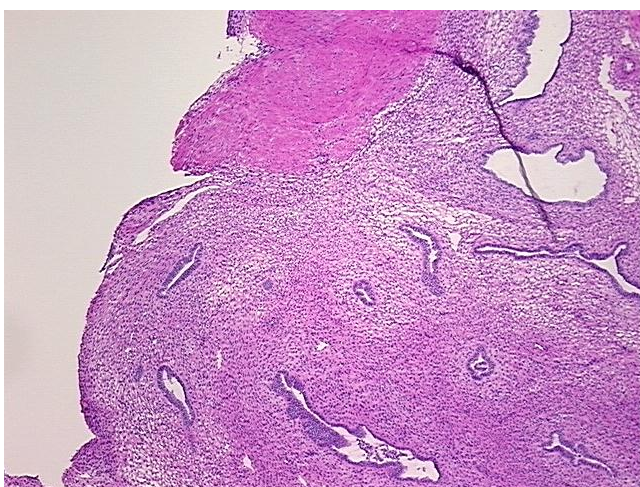
Product data:

| | |
|---|---------------------------|
| Product Type: | Frozen Sections |
| Disease State: | Other Disease |
| Diagnosis Category: | Adenosis |
| Tissue: | Myometrium |
| Frozen Sample ID: | FR000008B2 |
| Case ID: | CU0000000230 |
| Tissue of Origin: | Myometrium |
| Site of Finding: | Myometrium |
| Appearance: | L |
| Sample Diagnosis (from Pathology Verification): | Adenomyosis of myometrium |
| Normal: | 70% |
| Lesional: | 30% |
| Tumor: | 0% |
| Tumor Hypo/Acellular Stroma: | 0% |
| Tumor Hypercellular Stroma: | 0% |
| Necrosis: | 0% |
| Pathology Verification notes from H&E review: | normal: 100% myometrium |
| CASE Diagnosis (from medical center path report): | Leiomyoma of myometrium |
| Age: | 50 |
| Gender: | Female |
| Tumor Grade: | Not Reported |

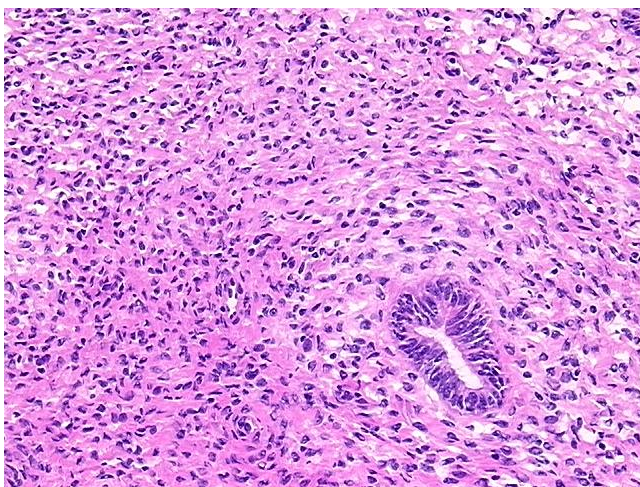


[View online »](#)

| | |
|------------------------------|--|
| Minimum Stage Grouping: | Not Reported |
| T (Extent of Primary Tumor): | Not Reported |
| N (Lymph node metastasis): | Not Reported |
| M (Distant metastasis): | Not Reported |
| Storage: | Store frozen tissue sections at -80°C. |
| Stability: | All frozen tissue sections are stable for 1 year from date of purchase if stored at -80°C without repeated freeze/thaws. |

Product images:

4x Image



20x Image