

Product datasheet for **CS600593**

Frozen Tissue Sections, Adipose tissue

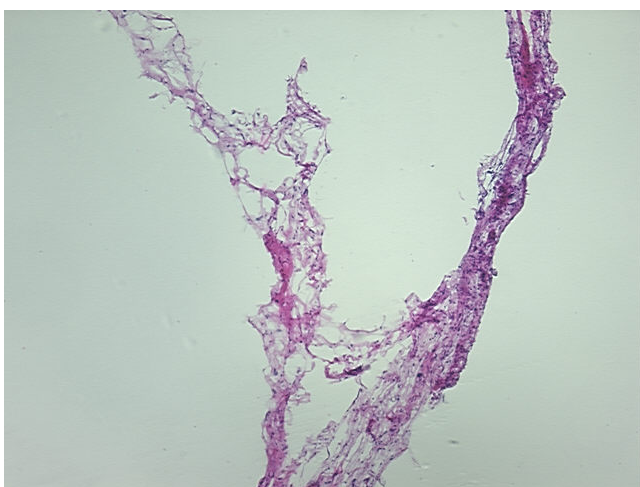
Product data:

Product Type:	Frozen Sections
Disease State:	Other Disease
Diagnosis Category:	Benign Tumors
Tissue:	Adipose tissue
Frozen Sample ID:	FR0000088C
Case ID:	CU0000000222
Tissue of Origin:	Adipose tissue
Site of Finding:	Adipose tissue
Appearance:	T
Sample Diagnosis (from Pathology Verification):	Lipoma, intramuscular, atypical
Normal:	10%
Lesional:	0%
Tumor:	60%
Tumor Hypo/Acellular Stroma:	20%
Tumor Hypercellular Stroma:	10%
Necrosis:	0%
Pathology Verification notes from H&E review:	Atypical intramuscular lipoma (well-differentiated "lipoma-like" intramuscular liposarcoma) with normal skeletal muscle present
CASE Diagnosis (from medical center path report):	Lipoma, intramuscular, atypical
Age:	75
Gender:	Female
Tumor Grade:	AJCC G1: Well differentiated

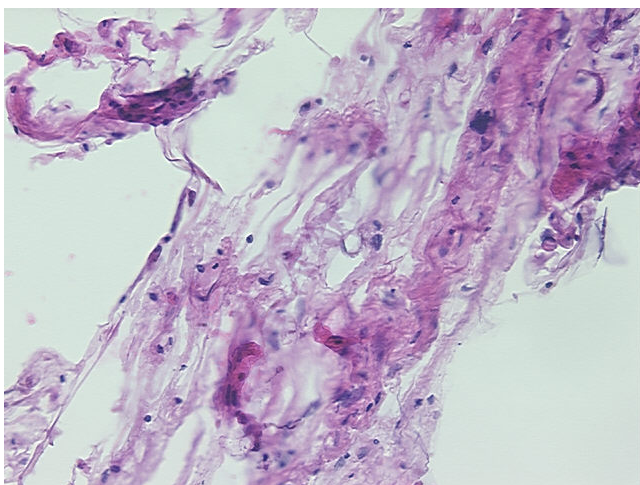


[View online »](#)

Minimum Stage Grouping:	Not Reported
T (Extent of Primary Tumor):	Not Reported
N (Lymph node metastasis):	Not Reported
M (Distant metastasis):	Not Reported
Storage:	Store frozen tissue sections at -80°C.
Stability:	All frozen tissue sections are stable for 1 year from date of purchase if stored at -80°C without repeated freeze/thaws.

Product images:

4x Image



20x Image