

Product datasheet for **CS600496**

Frozen Tissue Sections, Myometrium

Product data:

Product Type:	Frozen Sections
Disease State:	Normal
Diagnosis Category:	Normal
Tissue:	Myometrium
Frozen Sample ID:	FR0000077D
Case ID:	CU0000000190
Tissue of Origin:	Myometrium
Site of Finding:	Myometrium
Appearance:	R
Sample Diagnosis (from Pathology Verification):	Within normal limits
Normal:	100%
Lesional:	0%
Tumor:	0%
Tumor Hypo/Acellular Stroma:	0%
Tumor Hypercellular Stroma:	0%
Necrosis:	0%
CASE Diagnosis (from medical center path report):	Leiomyoma, cellular
Age:	55
Gender:	Female
Tumor Grade:	Not Reported
Minimum Stage Grouping:	Not Reported



[View online »](#)

T (Extent of Primary Tumor): Not Reported

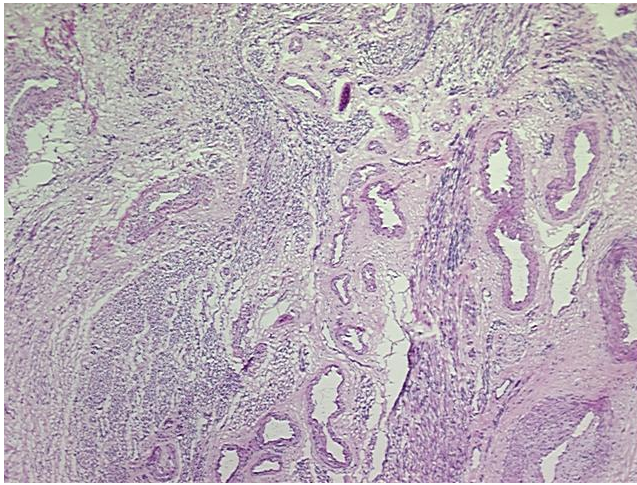
N (Lymph node metastasis): Not Reported

M (Distant metastasis): Not Reported

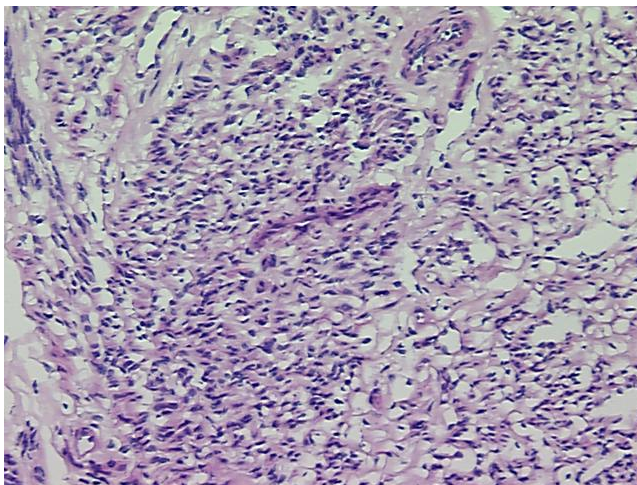
Storage: Store frozen tissue sections at -80°C.

Stability: All frozen tissue sections are stable for 1 year from date of purchase if stored at -80°C without repeated freeze/thaws.

Product images:



4x Image



20x Image