

Product datasheet for **CS600420**

Frozen Tissue Sections, Lymphoid tissue

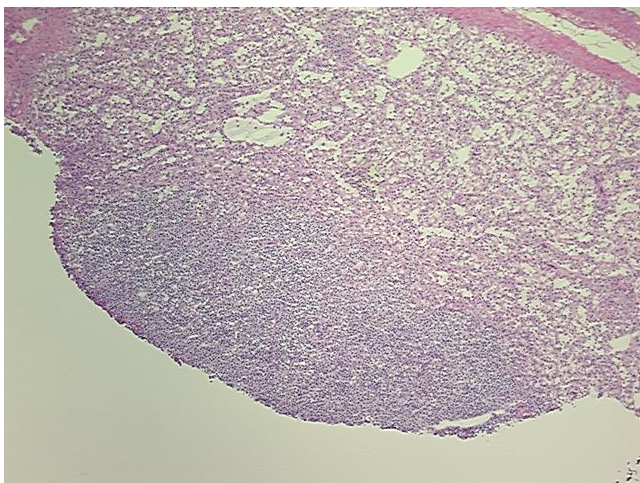
Product data:

Product Type:	Frozen Sections
Disease State:	Cancer
Diagnosis Category:	Lymphoma
Tissue:	Lymphoid tissue
Frozen Sample ID:	FR000006F0
Case ID:	CU0000000164
Tissue of Origin:	Lymphoid tissue
Site of Finding:	Spleen
Appearance:	T
Sample Diagnosis (from Pathology Verification):	Lymphoma, large B-cell, diffuse
Normal:	60%
Lesional:	0%
Tumor:	30%
Tumor Hypo/Acellular Stroma:	3%
Tumor Hypercellular Stroma:	5%
Necrosis:	2%
Pathology Verification notes from H&E review:	Normal: 60% red pulp is infiltrated with tumor cells.
CASE Diagnosis (from medical center path report):	Lymphoma, large B-cell, diffuse
Age:	60
Gender:	Female
Tumor Grade:	Not Reported

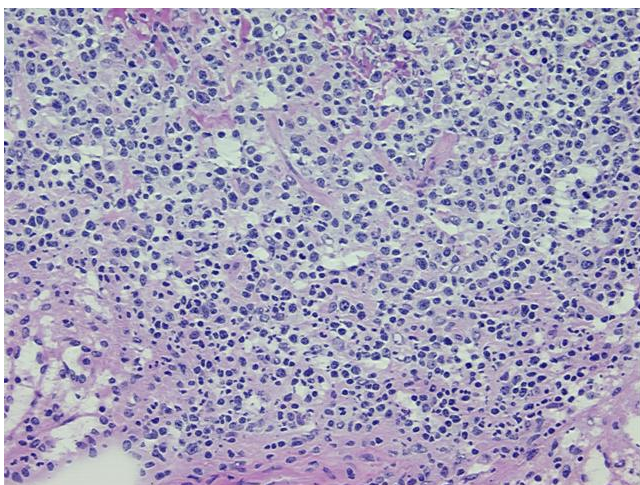


[View online »](#)

Minimum Stage Grouping:	IIE
T (Extent of Primary Tumor):	Not applicable
N (Lymph node metastasis):	Not applicable
M (Distant metastasis):	Not applicable
Diagnostic Test Results:	CD19 ~ B4 ~ Leu12 ! by IHC,Positive; CD22 ~ Leu14 ! by IHC,Positive; Kappa light chain ! by IHC,Positive; CD5 ~ Leu1 ! by IHC,Negative; CD10 ~ CALLA ~ Common ALL antigen ! by IHC,Negative; CD23 ~ FceRII ! by IHC,Negative; CD20 ~ B1 ~ Leu
Storage:	Store frozen tissue sections at -80°C.
Stability:	All frozen tissue sections are stable for 1 year from date of purchase if stored at -80°C without repeated freeze/thaws.

Product images:

4x Image



20x Image