

Product datasheet for **CS600395**

Frozen Tissue Sections, Skin

Product data:

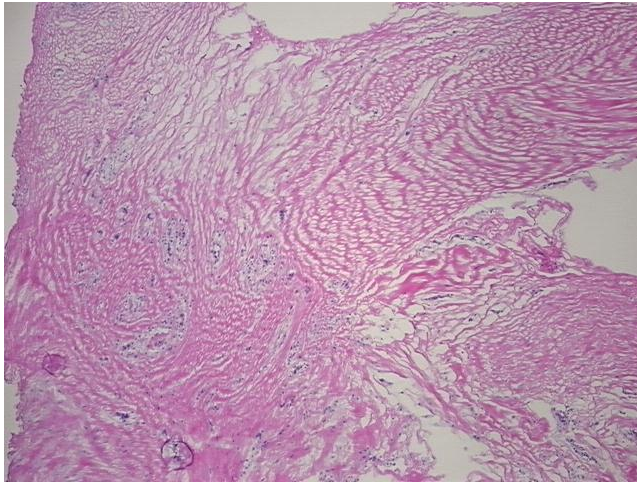
Product Type:	Frozen Sections
Disease State:	Other Disease
Diagnosis Category:	Keloid
Tissue:	Skin
Frozen Sample ID:	FR000006C0
Case ID:	CU0000000156
Tissue of Origin:	Skin
Site of Finding:	Skin
Appearance:	L
Sample Diagnosis (from Pathology Verification):	Keloid
Normal:	0%
Lesional:	100%
Tumor:	0%
Tumor Hypo/Acellular Stroma:	0%
Tumor Hypercellular Stroma:	0%
Necrosis:	0%
Pathology Verification notes from H&E review:	Non Tumor Structures: 100% Dermis
CASE Diagnosis (from medical center path report):	Keloid
Age:	60
Gender:	Female
Storage:	Store frozen tissue sections at -80°C.



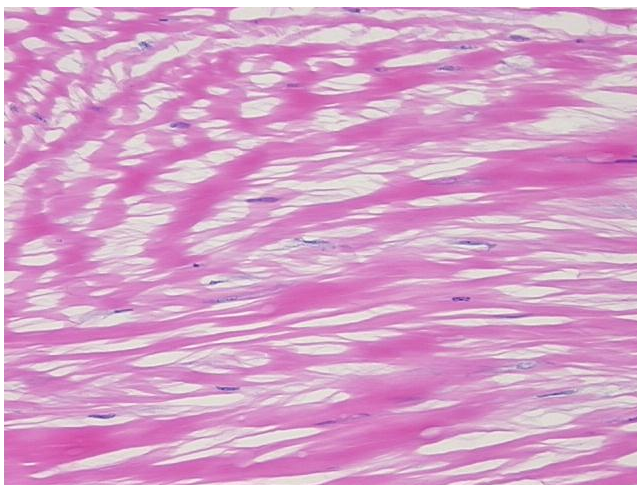
[View online »](#)

Stability: All frozen tissue sections are stable for 1 year from date of purchase if stored at -80°C without repeated freeze/thaws.

Product images:



4x Image



20x Image