

## Product datasheet for **CS600394**

### Frozen Tissue Sections, Artery: carotid

#### Product data:

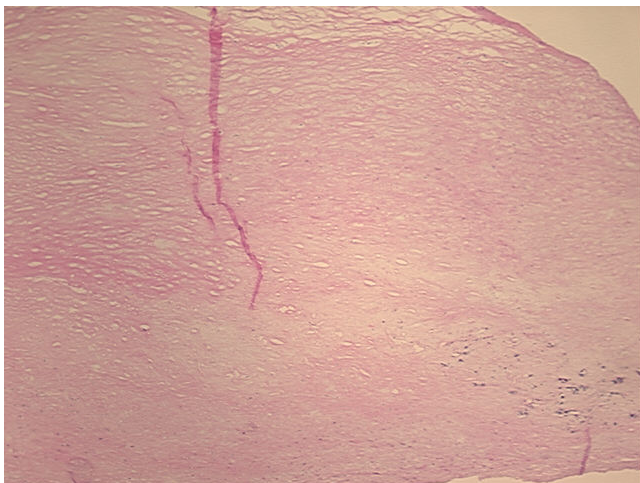
Product Type:	Frozen Sections
Disease State:	Other Disease
Diagnosis Category:	Atherosclerosis
Tissue:	Artery
Frozen Sample ID:	FR000006BF
Case ID:	CU0000000155
Tissue of Origin:	Artery: carotid
Site of Finding:	Artery: carotid
Appearance:	L
Sample Diagnosis (from Pathology Verification):	Atherosclerotic plaque
Normal:	0%
Lesional:	100%
Tumor:	0%
Tumor Hypo/Acellular Stroma:	0%
Tumor Hypercellular Stroma:	0%
Necrosis:	0%
Pathology Verification notes from H&E review:	Calcified atherosclerotic plaque
CASE Diagnosis (from medical center path report):	Atherosclerotic plaque
Age:	65
Gender:	Male
Storage:	Store frozen tissue sections at -80°C.



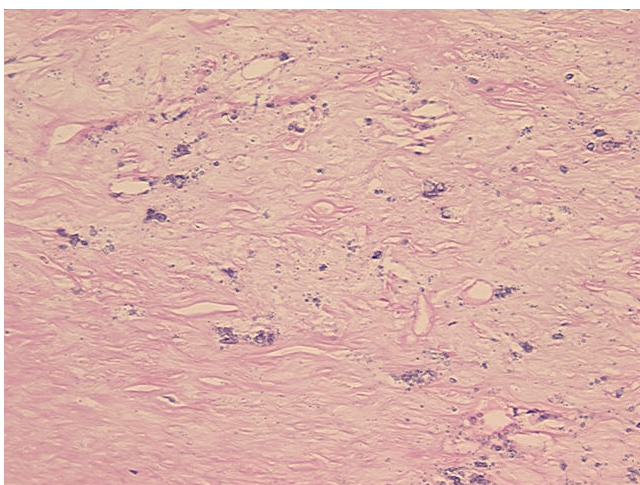
[View online »](#)

**Stability:** All frozen tissue sections are stable for 1 year from date of purchase if stored at -80°C without repeated freeze/thaws.

**Product images:**



4x Image



20x Image