

## Product datasheet for **CS600390**

### Frozen Tissue Sections, Muscle tissue

#### Product data:

Product Type:	Frozen Sections
Disease State:	Other Disease
Diagnosis Category:	Benign Tumors
Tissue:	Muscle tissue
Frozen Sample ID:	FR000006BA
Case ID:	CU0000000153
Tissue of Origin:	Muscle tissue
Site of Finding:	Muscle tissue
Appearance:	T
Sample Diagnosis (from Pathology Verification):	Myxoma, intramuscular
Normal:	5%
Lesional:	0%
Tumor:	95%
Tumor Hypo/Acellular Stroma:	0%
Tumor Hypercellular Stroma:	0%
Necrosis:	0%
Pathology Verification notes from H&E review:	Tumor is hypocellular
CASE Diagnosis (from medical center path report):	Myxoma, intramuscular
Age:	65
Gender:	Male
Tumor Grade:	Not Reported



[View online »](#)

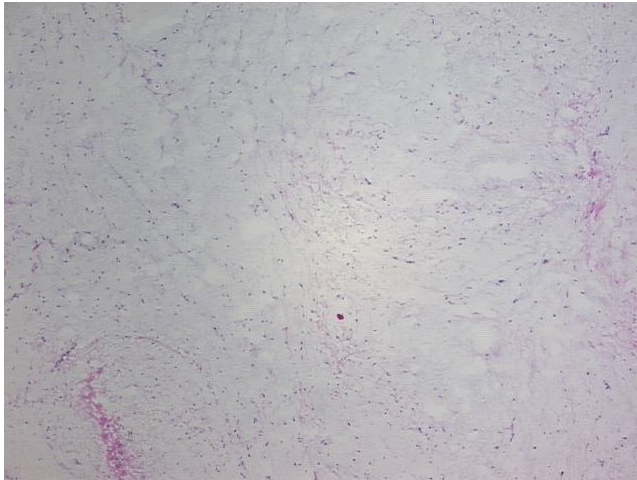
T (Extent of Primary Tumor): Not Reported

N (Lymph node metastasis): Not Reported

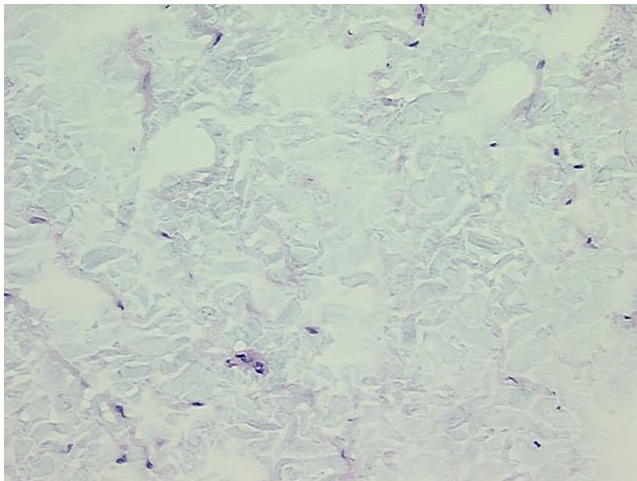
Storage: Store frozen tissue sections at -80°C.

Stability: All frozen tissue sections are stable for 1 year from date of purchase if stored at -80°C without repeated freeze/thaws.

**Product images:**



4x Image



20x Image