

## Product datasheet for **CS600238**

### Frozen Tissue Sections, Axillary region

#### Product data:

Product Type:	Frozen Sections
Disease State:	Other Disease
Diagnosis Category:	Benign Tumors
Tissue:	Axillary region
Frozen Sample ID:	FR000003F2
Case ID:	CU0000000103
Tissue of Origin:	Axillary region
Site of Finding:	Axillary region
Appearance:	T
Sample Diagnosis (from Pathology Verification):	Tumor, granular cell, intramuscular
Normal:	0%
Lesional:	0%
Tumor:	75%
Tumor Hypo/Acellular Stroma:	5%
Tumor Hypercellular Stroma:	20%
Necrosis:	0%
CASE Diagnosis (from medical center path report):	Tumor, granular cell, intramuscular
Age:	60
Gender:	Female
Tumor Grade:	Not Reported
T (Extent of Primary Tumor):	Not Reported



[View online »](#)

N (Lymph node metastasis):

Not Reported

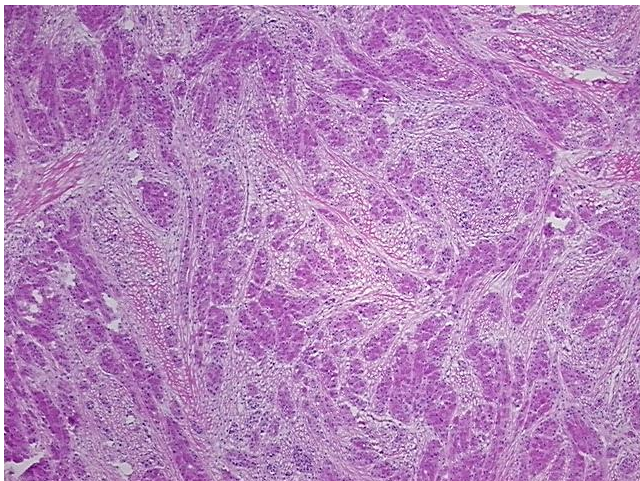
Storage:

Store frozen tissue sections at -80°C.

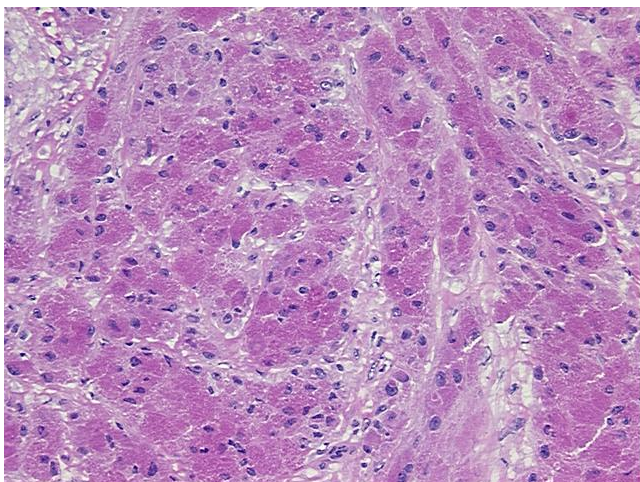
Stability:

All frozen tissue sections are stable for 1 year from date of purchase if stored at -80°C without repeated freeze/thaws.

### Product images:



4x Image



20x Image