

## Product datasheet for **CS600213**

### Frozen Tissue Sections, Colon

#### Product data:

Product Type:	Frozen Sections
Disease State:	Cancer
Diagnosis Category:	Colorectal Cancer
Tissue:	Colon
Frozen Sample ID:	FR000003B2
Case ID:	CU00000000095
Tissue of Origin:	Colon
Site of Finding:	Lung
Appearance:	T
Sample Diagnosis (from Pathology Verification):	Adenocarcinoma, metastatic, consistent with colon primary
Normal:	5%
Lesional:	0%
Tumor:	30%
Tumor Hypo/Acellular Stroma:	2%
Tumor Hypercellular Stroma:	23%
Necrosis:	40%
Pathology Verification notes from H&E review:	Tumor metastasized to the lung



**CASE Diagnosis (from medical center path report):** Adenocarcinoma, metastatic, consistent with colon primary

**Age:** 54

**Gender:** Male

**Tumor Grade:** Not Reported

**Minimum Stage Grouping:** IV

**T (Extent of Primary Tumor):** TX

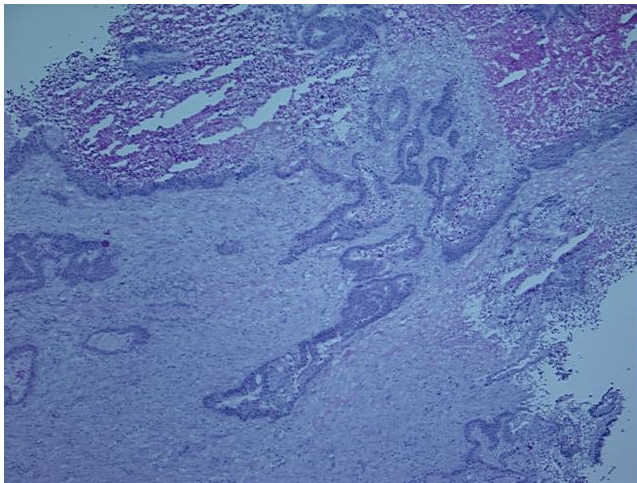
**N (Lymph node metastasis):** NX

**M (Distant metastasis):** M1

**Storage:** Store frozen tissue sections at -80°C.

**Stability:** All frozen tissue sections are stable for 1 year from date of purchase if stored at -80°C without repeated freeze/thaws.

**Product images:**



4x Image