

## Product datasheet for **CS600180**

### Frozen Tissue Sections, Ovary

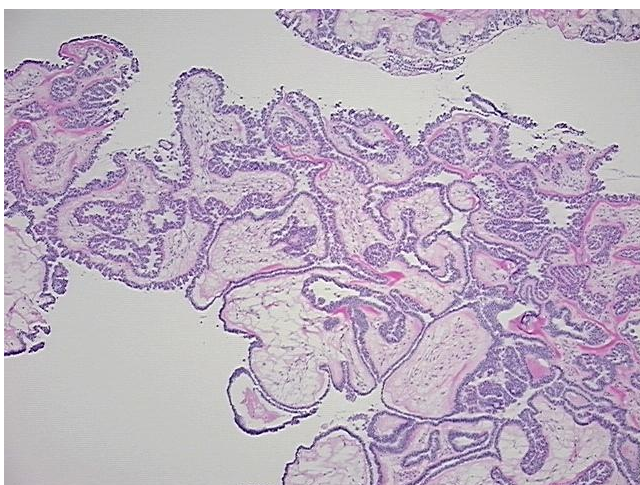
#### Product data:

Product Type:	Frozen Sections
Disease State:	Other Disease
Diagnosis Category:	Borderline Ovarian Tumor
Tissue:	Ovary
Frozen Sample ID:	FR000004C6
Case ID:	CU00000000085
Tissue of Origin:	Ovary
Site of Finding:	Ovary
Appearance:	T
Sample Diagnosis (from Pathology Verification):	Tumor of ovary, serous, borderline
Normal:	0%
Lesional:	0%
Tumor:	50%
Tumor Hypo/Acellular Stroma:	0%
Tumor Hypercellular Stroma:	50%
Necrosis:	0%
CASE Diagnosis (from medical center path report):	Tumor of ovary, serous, borderline
Age:	45
Gender:	Female
Tumor Grade:	AJCC GB: Borderline malignancy
Minimum Stage Grouping:	IC

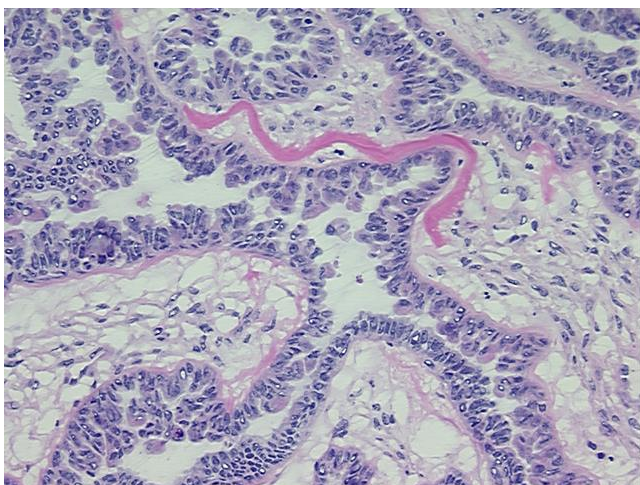

[View online »](#)

<b>T (Extent of Primary Tumor):</b>	T1c
<b>N (Lymph node metastasis):</b>	N0
<b>M (Distant metastasis):</b>	MX
<b>Diagnostic Test Results:</b>	Epithelial specific antigen ~ BerEP4 ~ MOC31 ! by IHC,Negative; Calretinin,Positive
<b>Storage:</b>	Store frozen tissue sections at -80°C.
<b>Stability:</b>	All frozen tissue sections are stable for 1 year from date of purchase if stored at -80°C without repeated freeze/thaws.

### Product images:



4x Image



20x Image