

## Product datasheet for **CS600148**

### Frozen Tissue Sections, Lymphoid tissue

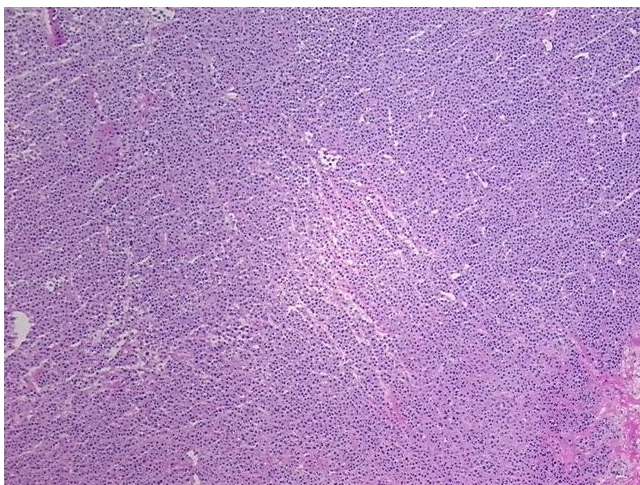
#### Product data:

Product Type:	Frozen Sections
Disease State:	Cancer
Diagnosis Category:	Plasmacytoma
Tissue:	Shoulder
Frozen Sample ID:	FR0000050C
Case ID:	CU0000000064
Tissue of Origin:	Lymphoid tissue
Site of Finding:	Shoulder
Appearance:	T
Sample Diagnosis (from Pathology Verification):	Plasmacytoma
Normal:	5%
Lesional:	0%
Tumor:	90%
Tumor Hypo/Acellular Stroma:	5%
Tumor Hypercellular Stroma:	0%
Necrosis:	0%
Pathology Verification notes from H&E review:	Tumor Stroma (Hypo/Acellular): Fibrosis; Non Tumor Structures: 100% Skeletal muscle
CASE Diagnosis (from medical center path report):	Plasmacytoma
Age:	65
Gender:	Male
Tumor Grade:	Not Reported

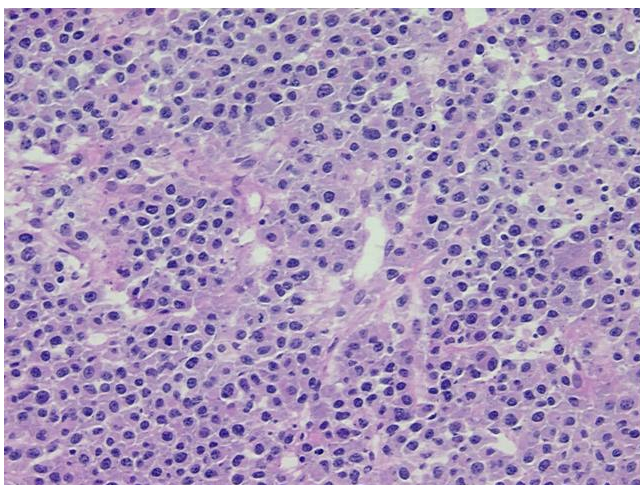


[View online »](#)

Minimum Stage Grouping:	Not Reported
T (Extent of Primary Tumor):	Not Reported
N (Lymph node metastasis):	Not Reported
M (Distant metastasis):	Not Reported
Diagnostic Test Results:	Myoglobin ! by IHC,Negative; Vimentin ~ VIM ! by IHC,Positive; Kappa light chain ! by IHC,Negative; Lambda light chain ! by IHC,Positive; CD79a ~ Ig alpha ! by IHC,Positive
Storage:	Store frozen tissue sections at -80°C.
Stability:	All frozen tissue sections are stable for 1 year from date of purchase if stored at -80°C without repeated freeze/thaws.

**Product images:**

4x Image



20x Image