

## Product datasheet for **CS600014**

### Frozen Tissue Sections, Soft tissue

#### Product data:

Product Type:	Frozen Sections
Disease State:	Cancer
Diagnosis Category:	Sarcoma
Tissue:	Soft tissue
Frozen Sample ID:	FR0000025A
Case ID:	CU0000000005
Tissue of Origin:	Soft tissue
Site of Finding:	Lung
Appearance:	T
Sample Diagnosis (from Pathology Verification):	Histiocytoma, malignant fibrous, metastatic
Normal:	0%
Lesional:	0%
Tumor:	99%
Tumor Hypo/Acellular Stroma:	0%
Tumor Hypercellular Stroma:	1%
Necrosis:	0%
Pathology Verification notes from H&E review:	Pleural surface
CASE Diagnosis (from medical center path report):	Histiocytoma, malignant fibrous, metastatic
Age:	53
Gender:	Female
Tumor Grade:	Not Reported



[View online »](#)

Minimum Stage Grouping: IV

T (Extent of Primary Tumor): TX

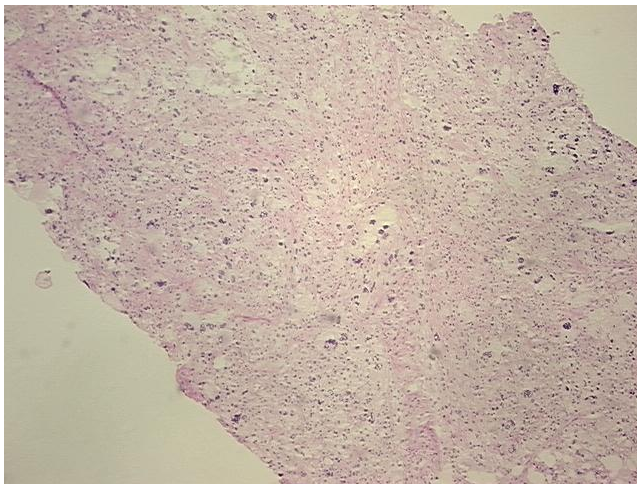
N (Lymph node metastasis): NX

M (Distant metastasis): M1

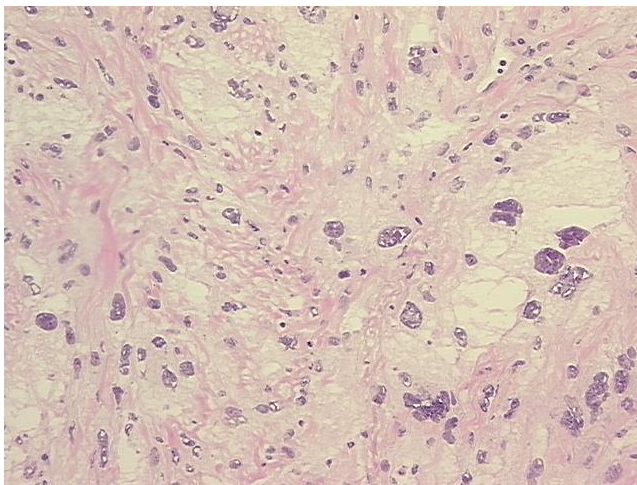
Storage: Store frozen tissue sections at -80°C.

Stability: All frozen tissue sections are stable for 1 year from date of purchase if stored at -80°C without repeated freeze/thaws.

### Product images:



4x Image



20x Image