

Product datasheet for **CS558743**

Frozen Tissue Sections, Colon: transverse

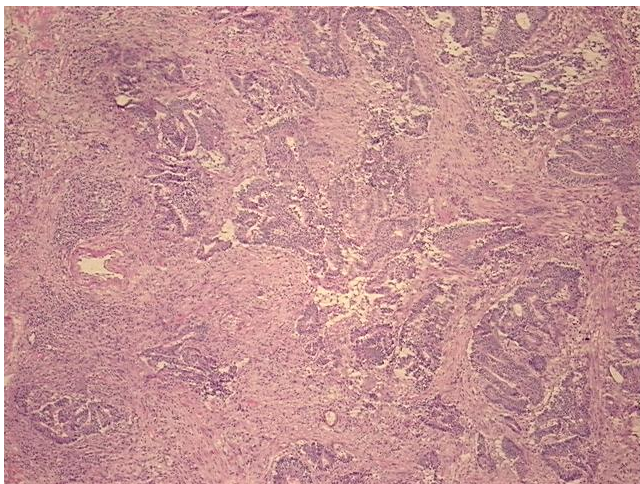
Product data:

Product Type:	Frozen Sections
Disease State:	Cancer
Diagnosis Category:	Colorectal Cancer
Tissue:	Colon
Frozen Sample ID:	FR5B34825E
Case ID:	CI7000000550
Tissue of Origin:	Colon: transverse
Site of Finding:	Colon: transverse
Appearance:	T
Sample Diagnosis (from Pathology Verification):	Adenocarcinoma of colon
Normal:	40%
Lesional:	0%
Tumor:	30%
Tumor Hypo/Acellular Stroma:	15%
Tumor Hypercellular Stroma:	15%
Necrosis:	0%
Pathology Verification notes from H&E review:	Non Tumor Structures: 60% Mucosa, 10% Submucosa, 30% Muscle
CASE Diagnosis (from medical center path report):	Adenocarcinoma of colon
Age:	61
Gender:	Female
Race:	White or Caucasian

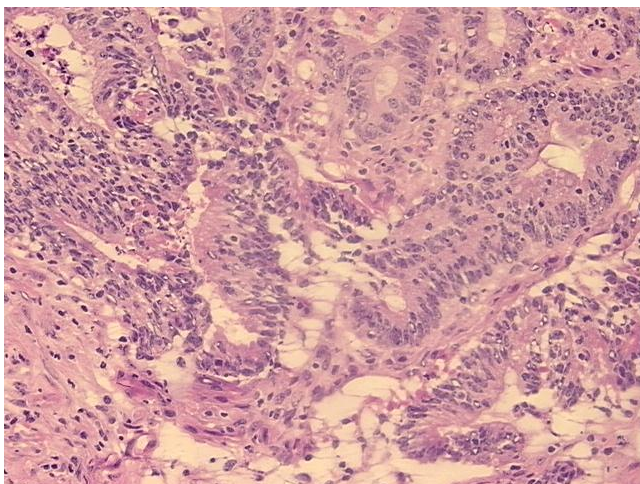


[View online »](#)

Tumor Grade:	AJCC G1: Well differentiated
Minimum Stage Grouping:	I
T (Extent of Primary Tumor):	T2
N (Lymph node metastasis):	N0
M (Distant metastasis):	MX
Storage:	Store frozen tissue sections at -80°C.
Stability:	All frozen tissue sections are stable for 1 year from date of purchase if stored at -80°C without repeated freeze/thaws.

Product images:

4x Image



20x Image