

## Product datasheet for **CS558477**

### Frozen Tissue Sections, Lung

#### Product data:

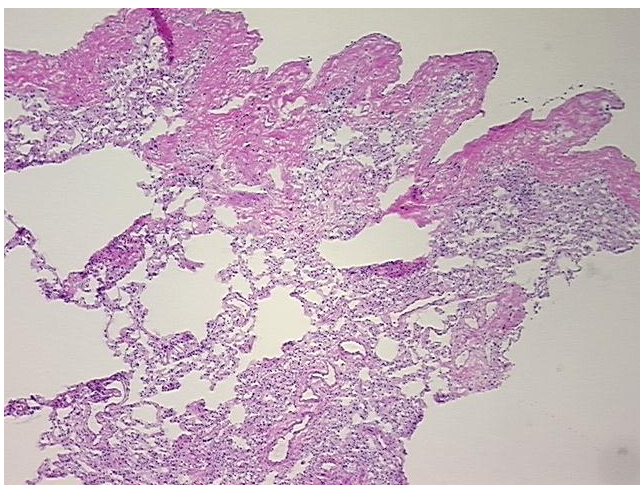
Product Type:	Frozen Sections
Disease State:	Other Disease
Diagnosis Category:	Fibrosis
Tissue:	Lung
Frozen Sample ID:	FR000362C1
Case ID:	CI7000000492
Tissue of Origin:	Lung
Site of Finding:	Lung
Appearance:	L
Sample Diagnosis (from Pathology Verification):	Fibrosis
Normal:	0%
Lesional:	100%
Tumor:	0%
Tumor Hypo/Acellular Stroma:	0%
Tumor Hypercellular Stroma:	0%
Necrosis:	0%
Pathology Verification notes from H&E review:	Non Tumor Structures: 60% Alveoli, 20% Bronchioles, 20% Fibrovascular septa
CASE Diagnosis (from medical center path report):	Malignant melanoma, metastatic
Age:	54
Gender:	Female
Race:	White or Caucasian



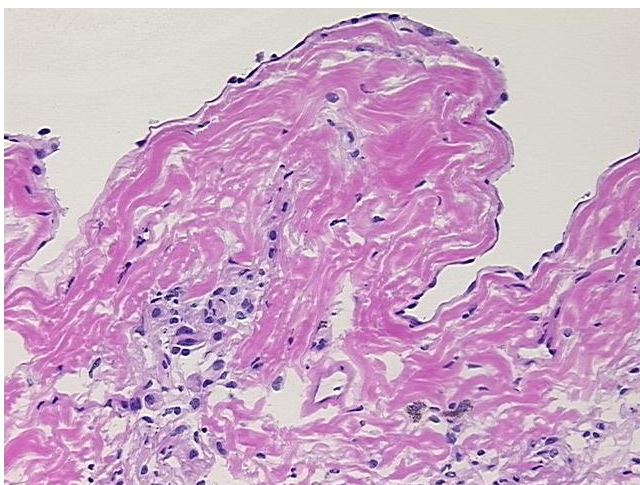
[View online »](#)

<b>Tumor Grade:</b>	Not Reported
<b>Minimum Stage Grouping:</b>	IV
<b>T (Extent of Primary Tumor):</b>	TX
<b>N (Lymph node metastasis):</b>	NX
<b>M (Distant metastasis):</b>	M1b
<b>Diagnostic Test Results:</b>	Cytokeratin (Pan) ~ Keratin, Pan ! by IHC,Negative; S100 protein,Positive, diffuse; HMB45 melanoma antigen ~ GP100 ! by IHC,Positive, strong
<b>Storage:</b>	Store frozen tissue sections at -80°C.
<b>Stability:</b>	All frozen tissue sections are stable for 1 year from date of purchase if stored at -80°C without repeated freeze/thaws.

### Product images:



4x Image



20x Image