

Product datasheet for CS558422

Frozen Tissue Sections, Joint

Product data:

Product Type:	Frozen Sections
Disease State:	Other Disease
Diagnosis Category:	Arthritis
Tissue:	Joint
Frozen Sample ID:	FR00044BA4
Case ID:	CI7000000468
Tissue of Origin:	Joint
Site of Finding:	Joint
Appearance:	L
Sample Diagnosis (from Pathology Verification):	Osteoarthritis
Normal:	0%
Lesional:	100%
Tumor:	0%
Tumor Hypo/Acellular Stroma:	0%
Tumor Hypercellular Stroma:	0%
Necrosis:	0%
Pathology Verification notes from H&E review:	Inflammation: Mild Mixed inflammatory infiltrate; Non Tumor Structures: 10% Synovial lining, 50% Fibrous stroma, 40% Tendon; Other Features/Comments: proliferative synovitis present
CASE Diagnosis (from medical center path report):	Osteoarthritis
Age:	73
Gender:	Male
Race:	White or Caucasian

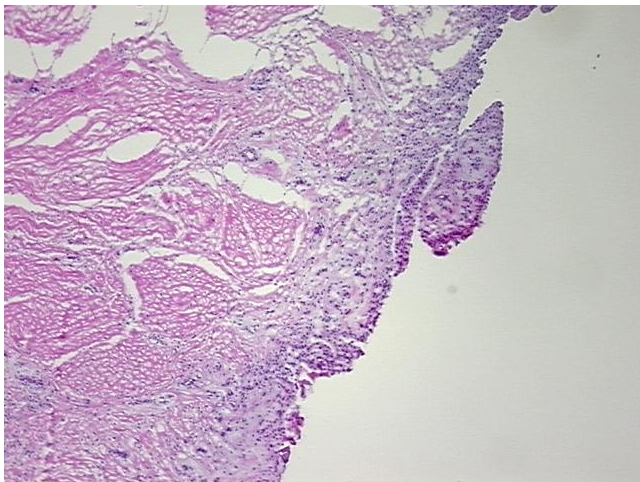


[View online »](#)

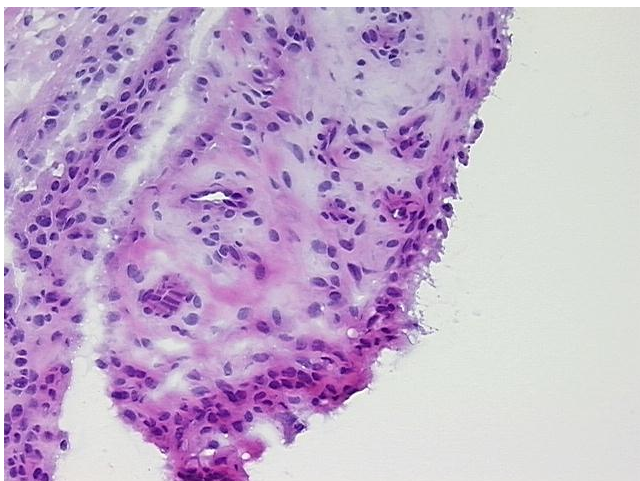
Storage: Store frozen tissue sections at -80°C.

Stability: All frozen tissue sections are stable for 1 year from date of purchase if stored at -80°C without repeated freeze/thaws.

Product images:



4x Image



20x Image