

## Product datasheet for **CS558363**

### Frozen Tissue Sections, Colon

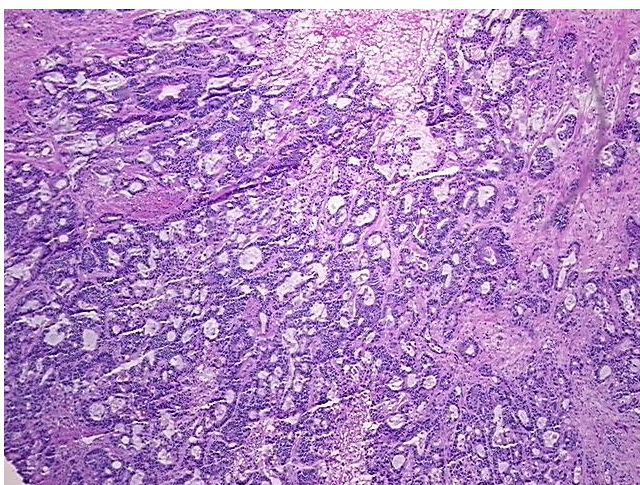
#### Product data:

Product Type:	Frozen Sections
Disease State:	Cancer
Diagnosis Category:	Colorectal Cancer
Tissue:	Colon
Frozen Sample ID:	FR0003F33E
Case ID:	CI7000000459
Tissue of Origin:	Colon
Site of Finding:	Liver
Appearance:	T
Sample Diagnosis (from Pathology Verification):	Adenocarcinoma of colon, metastatic
Normal:	5%
Lesional:	0%
Tumor:	45%
Tumor Hypo/Acellular Stroma:	0%
Tumor Hypercellular Stroma:	35%
Necrosis:	15%
CASE Diagnosis (from medical center path report):	Adenocarcinoma of colon, metastatic
Age:	66
Gender:	Female
Race:	White or Caucasian
Tumor Grade:	Not Reported

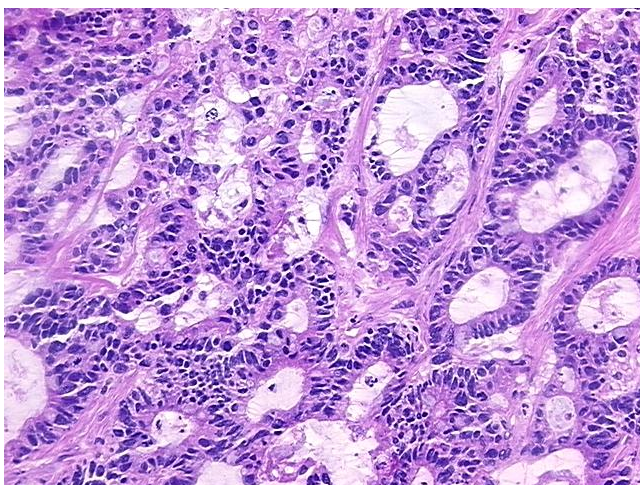

[View online »](#)

<b>Minimum Stage Grouping:</b>	IV
<b>T (Extent of Primary Tumor):</b>	T3
<b>N (Lymph node metastasis):</b>	N1
<b>M (Distant metastasis):</b>	M1
<b>Diagnostic Test Results:</b>	GMS ~ Grocott methenamine silver stain,Negative; Acid-fast bacteria ~ AFB ~ Ziehl-Neelsen acid fast,Negative
<b>Storage:</b>	Store frozen tissue sections at -80°C.
<b>Stability:</b>	All frozen tissue sections are stable for 1 year from date of purchase if stored at -80°C without repeated freeze/thaws.

### Product images:



4x Image



20x Image