

Product datasheet for **CS558335**

Frozen Tissue Sections, Colon

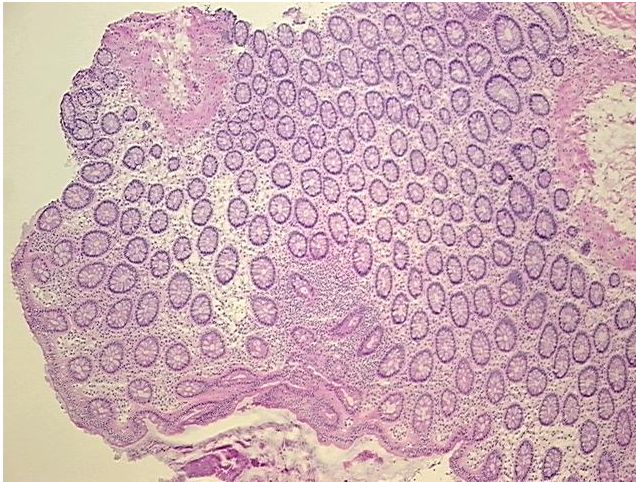
Product data:

Product Type:	Frozen Sections
Disease State:	Normal
Diagnosis Category:	Normal
Tissue:	Colon
Frozen Sample ID:	FR0003EDC1
Case ID:	CI7000000449
Tissue of Origin:	Colon
Site of Finding:	Colon
Appearance:	R
Sample Diagnosis (from Pathology Verification):	Within normal limits
Normal:	100%
Lesional:	0%
Tumor:	0%
Tumor Hypo/Acellular Stroma:	0%
Tumor Hypercellular Stroma:	0%
Necrosis:	0%
Pathology Verification notes from H&E review:	Non Tumor Structures: 50% Mucosa, 10% Submucosa, 40% Muscle
CASE Diagnosis (from medical center path report):	Adenocarcinoma of colon
Age:	73
Gender:	Female
Race:	White or Caucasian

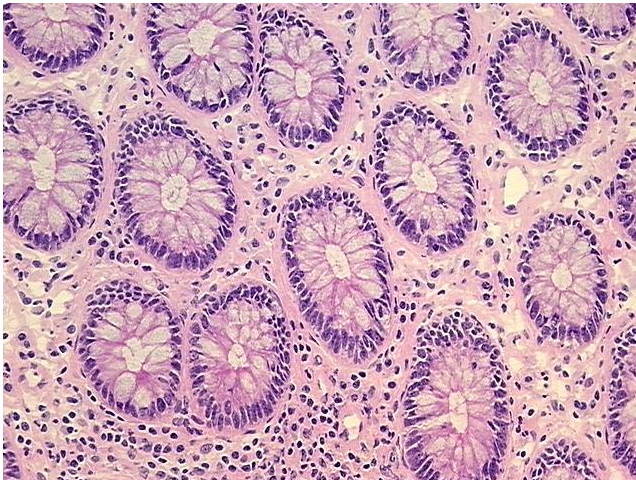


[View online »](#)

Tumor Grade:	AJCC G2: Moderately differentiated
Minimum Stage Grouping:	IIIB
T (Extent of Primary Tumor):	T4
N (Lymph node metastasis):	N1
M (Distant metastasis):	MX
Storage:	Store frozen tissue sections at -80°C.
Stability:	All frozen tissue sections are stable for 1 year from date of purchase if stored at -80°C without repeated freeze/thaws.

Product images:

4x Image



20x Image