

Product datasheet for CS558324

Frozen Tissue Sections, Lung: right upper lobe

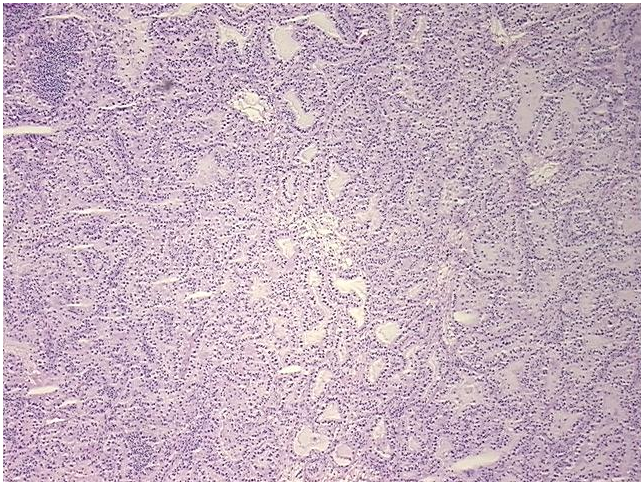
Product data:

Product Type:	Frozen Sections
Disease State:	Cancer
Diagnosis Category:	Lung Cancer
Tissue:	Lung
Frozen Sample ID:	FR0003DF92
Case ID:	CI7000000444
Tissue of Origin:	Lung: right upper lobe
Site of Finding:	Lung: right upper lobe
Appearance:	T
Sample Diagnosis (from Pathology Verification):	Adenocarcinoma of lung, acinar, bronchioalveolar
Normal:	0%
Lesional:	0%
Tumor:	80%
Tumor Hypo/Acellular Stroma:	0%
Tumor Hypercellular Stroma:	20%
Necrosis:	0%
CASE Diagnosis (from medical center path report):	Adenocarcinoma of lung, acinar, bronchioalveolar
Age:	62
Gender:	Female
Race:	White or Caucasian
Tumor Grade:	AJCC G1: Well differentiated

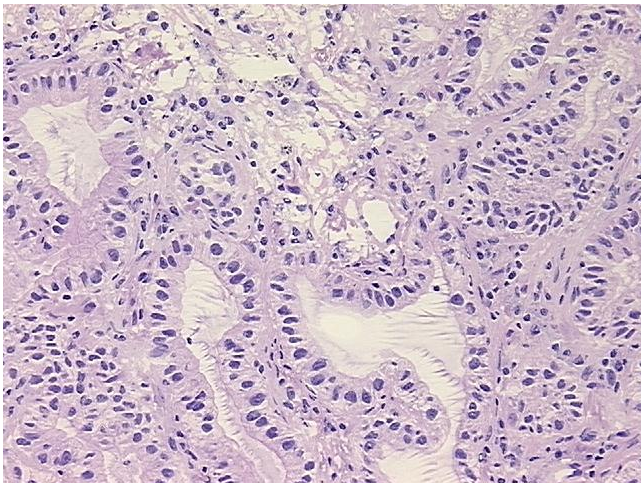

[View online »](#)

Minimum Stage Grouping:	IA
T (Extent of Primary Tumor):	T1
N (Lymph node metastasis):	N0
M (Distant metastasis):	MX
Storage:	Store frozen tissue sections at -80°C.
Stability:	All frozen tissue sections are stable for 1 year from date of purchase if stored at -80°C without repeated freeze/thaws.

Product images:



4x Image



20x Image