

Product datasheet for CS557264

Frozen Tissue Sections, Bile duct

Product data:

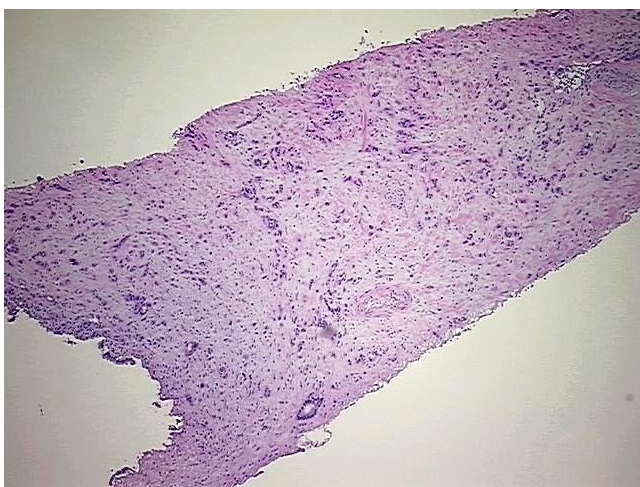
Product Type:	Frozen Sections
Disease State:	Cancer
Tissue:	Bile duct
Frozen Sample ID:	FR00030743
Case ID:	CI7000000098
Tissue of Origin:	Bile duct
Site of Finding:	Liver
Appearance:	Tumor
Sample Diagnosis (from Pathology Verification):	Cholangiocarcinoma of liver
Normal:	15%
Lesional:	0%
Tumor:	15%
Tumor Hypo/Acellular Stroma:	0%
Tumor Hypercellular Stroma:	70%
Necrosis:	0%
Pathology Verification notes from H&E review:	Tumor Stroma (Cellular): Desmoplastic reaction, Inflammatory cells
CASE Diagnosis (from medical center path report):	Cholangiocarcinoma of liver
Age:	66
Gender:	Female
Tumor Grade:	Not Reported



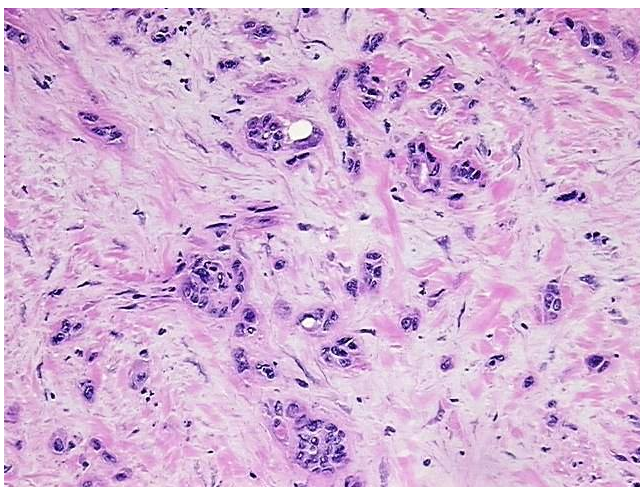
[View online »](#)

Minimum Stage Grouping:	IV
T (Extent of Primary Tumor):	pT1
N (Lymph node metastasis):	pNX
M (Distant metastasis):	pM1
Storage:	Store frozen tissue sections at -80°C.
Stability:	All frozen tissue sections are stable for 1 year from date of purchase if stored at -80°C without repeated freeze/thaws.

Product images:



4x Image



20x Image