

## Product datasheet for CS557261

### Frozen Tissue Sections, Bile duct

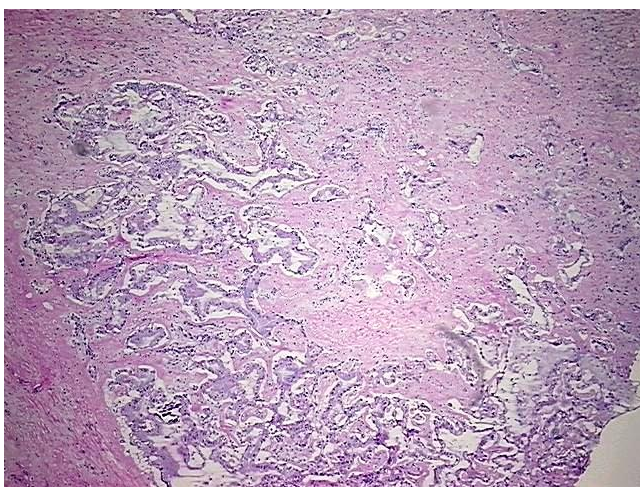
#### Product data:

Product Type:	Frozen Sections
Disease State:	Cancer
Tissue:	Bile duct
Frozen Sample ID:	FR0003073B
Case ID:	CI7000000098
Tissue of Origin:	Bile duct
Site of Finding:	Liver
Appearance:	Tumor
Sample Diagnosis (from Pathology Verification):	Cholangiocarcinoma of liver
Normal:	2%
Lesional:	0%
Tumor:	25%
Tumor Hypo/Acellular Stroma:	0%
Tumor Hypercellular Stroma:	73%
Necrosis:	0%
Pathology Verification notes from H&E review:	Tumor Stroma (Cellular): Desmoplastic reaction, Fibroblastic cells
CASE Diagnosis (from medical center path report):	Cholangiocarcinoma of liver
Age:	66
Gender:	Female
Tumor Grade:	Not Reported

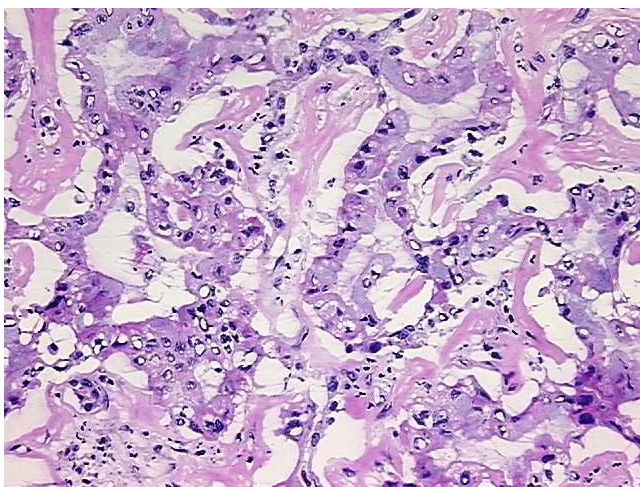


[View online »](#)

Minimum Stage Grouping:	IV
T (Extent of Primary Tumor):	pT1
N (Lymph node metastasis):	pNX
M (Distant metastasis):	pM1
Storage:	Store frozen tissue sections at -80°C.
Stability:	All frozen tissue sections are stable for 1 year from date of purchase if stored at -80°C without repeated freeze/thaws.

**Product images:**

4x Image



20x Image