

Product datasheet for **CS556793**

Frozen Tissue Sections, Ovary: bilateral

Product data:

Product Type:	Frozen Sections
Disease State:	Cancer
Diagnosis Category:	Ovarian Cancer
Tissue:	Ovary
Frozen Sample ID:	FR0004AF1E
Case ID:	CI0000022492
Tissue of Origin:	Ovary: bilateral
Site of Finding:	Omentum
Appearance:	T
Sample Diagnosis (from Pathology Verification):	Adenocarcinoma of ovary, endometrioid, serous, metastatic
Normal:	30%
Lesional:	0%
Tumor:	40%
Tumor Hypo/Acellular Stroma:	0%
Tumor Hypercellular Stroma:	29%
Necrosis:	1%
Pathology Verification notes from H&E review:	Tumor Stroma (Cellular): Desmoplastic reaction; Inflammation: Moderate Lymphoid infiltrate; Other Features/Comments: Tumor area: 6 mm x 4 mm
CASE Diagnosis (from medical center path report):	Adenocarcinoma of ovary, endometrioid, serous
Age:	43
Gender:	Female
Race:	White or Caucasian

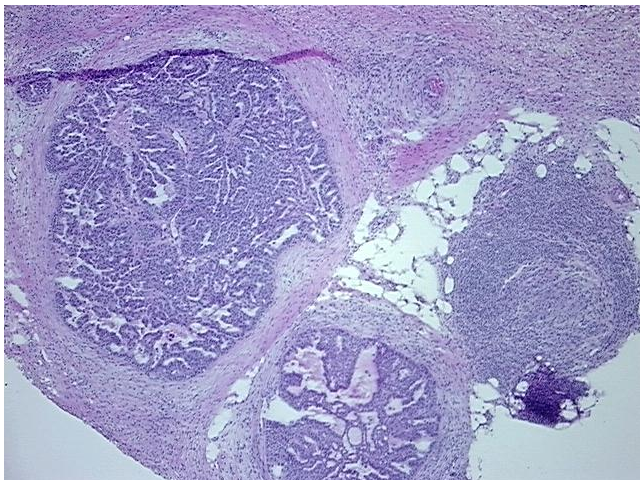


[View online »](#)

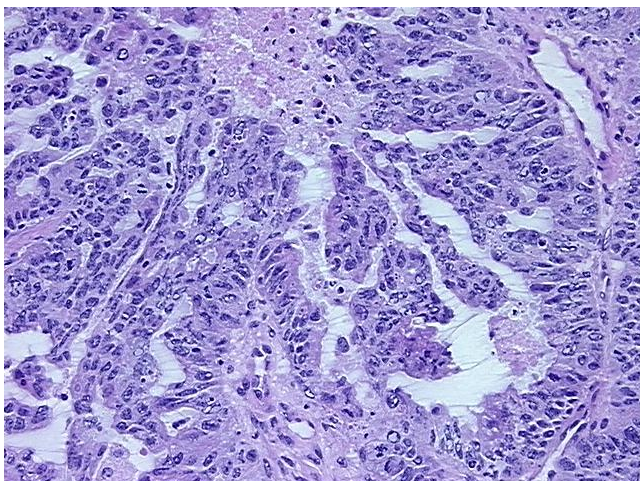
Storage: Store frozen tissue sections at -80°C.

Stability: All frozen tissue sections are stable for 1 year from date of purchase if stored at -80°C without repeated freeze/thaws.

Product images:



4x Image



20x Image