

Product datasheet for **CS556735**

Frozen Tissue Sections, Lung

Product data:

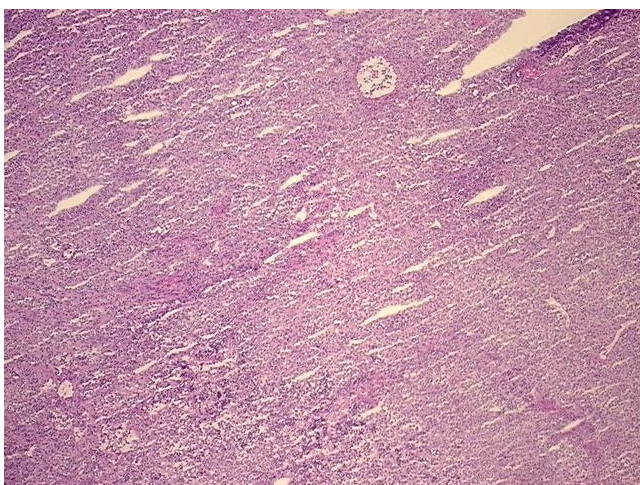
Product Type:	Frozen Sections
Disease State:	Cancer
Diagnosis Category:	Carcinoid/Neuroendocrine Tumors
Tissue:	Lung
Frozen Sample ID:	FR0004A4B6
Case ID:	CI0000022362
Tissue of Origin:	Lung
Site of Finding:	Abdominal wall
Appearance:	T
Sample Diagnosis (from Pathology Verification):	Tumor of lung, carcinoid, atypical, metastatic
Normal:	0%
Lesional:	0%
Tumor:	85%
Tumor Hypo/Acellular Stroma:	10%
Tumor Hypercellular Stroma:	5%
Necrosis:	0%
CASE Diagnosis (from medical center path report):	Tumor of lung, carcinoid, atypical, metastatic
Age:	48
Gender:	Female
Race:	White or Caucasian
Tumor Grade:	Not Reported



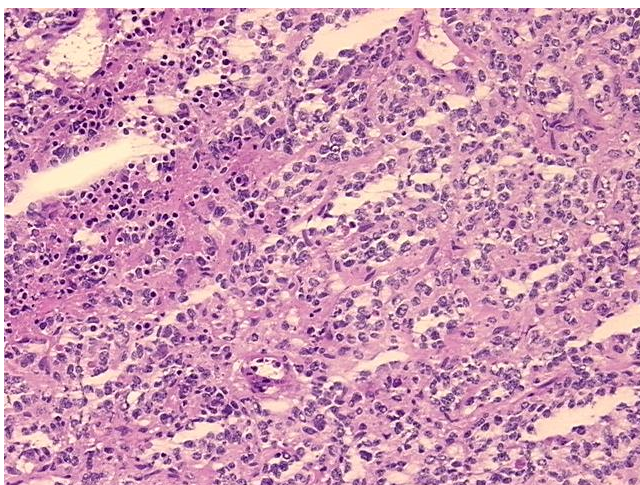
[View online »](#)

Minimum Stage Grouping:	IV
T (Extent of Primary Tumor):	TX
N (Lymph node metastasis):	NX
M (Distant metastasis):	M1
Diagnostic Test Results:	Cytokeratin (Pan) ~ Keratin, Pan ! by IHC,Positive; Synaptophysin ~ SYN ! by IHC,Positive; Chromogranin A ~ Parathyroid secretory protein 1 ! by IHC,Positive; Thyroid transcription factor 1 ~ TTF1 ! by IHC,Positive
Storage:	Store frozen tissue sections at -80°C.
Stability:	All frozen tissue sections are stable for 1 year from date of purchase if stored at -80°C without repeated freeze/thaws.

Product images:



4x Image



20x Image