

## Product datasheet for **CS556643**

### Frozen Tissue Sections, Lung: left upper lobe

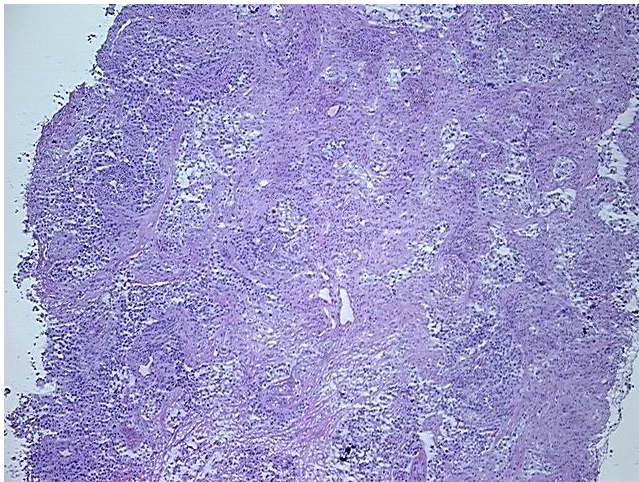
#### Product data:

Product Type:	Frozen Sections
Disease State:	Cancer
Diagnosis Category:	Lung Cancer
Tissue:	Lung
Frozen Sample ID:	FR00046885
Case ID:	CI0000022302
Tissue of Origin:	Lung: left upper lobe
Site of Finding:	Lung: left upper lobe
Appearance:	T
Sample Diagnosis (from Pathology Verification):	Adenocarcinoma of lung (EGFR+)
Normal:	0%
Lesional:	0%
Tumor:	40%
Tumor Hypo/Acellular Stroma:	0%
Tumor Hypercellular Stroma:	20%
Necrosis:	40%
Pathology Verification notes from H&E review:	Tumor Stroma (Cellular): Desmoplastic reaction, Inflammatory cells; Inflammation: Mild Lymphoplasmacytic infiltrate; Other Features/Comments: Tumor area: 9 mm x 2 mm
CASE Diagnosis (from medical center path report):	Adenocarcinoma of lung
Age:	51
Gender:	Female
Race:	Black or African American

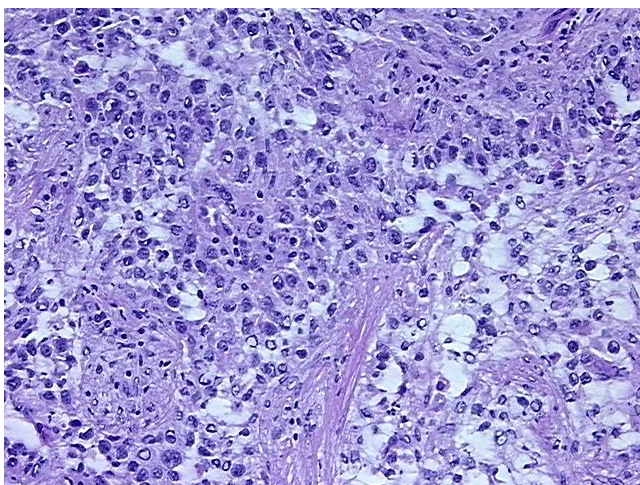


[View online »](#)

<b>Tumor Grade:</b>	AJCC G3: Poorly differentiated
<b>Minimum Stage Grouping:</b>	IB
<b>T (Extent of Primary Tumor):</b>	T2
<b>N (Lymph node metastasis):</b>	N0
<b>M (Distant metastasis):</b>	MX
<b>Diagnostic Test Results:</b>	Progesterone receptor ~ PR ! by IHC,Negative; Estrogen receptor ~ ER ! by IHC,Negative; ERBB1 ~ EGFR ~ Epidermal growth factor receptor ! by IHC,Positive, strong; HER2 ~ ERBB2 ~ Neu ! by IHC,Negative
<b>Storage:</b>	Store frozen tissue sections at -80°C.
<b>Stability:</b>	All frozen tissue sections are stable for 1 year from date of purchase if stored at -80°C without repeated freeze/thaws.

**Product images:**

4x Image



20x Image