

## Product datasheet for **CS556619**

### Frozen Tissue Sections, Ovary: bilateral

#### Product data:

|   |   |
|---|---|
| Product Type:                                     | Frozen Sections   |
| Disease State:                                    | Cancer  |
| Diagnosis Category:                               | Ovarian Cancer  |
| Tissue:   | Ovary   |
| Frozen Sample ID:                                 | FR0004678A  |
| Case ID:  | CI0000022290  |
| Tissue of Origin:                                 | Ovary: bilateral  |
| Site of Finding:                                  | Omentum   |
| Appearance:                                       | T   |
| Sample Diagnosis (from Pathology Verification):   | Adenocarcinoma of ovary, papillary serous, metastatic   |
| Normal:   | 0%  |
| Lesional:   | 0%  |
| Tumor:  | 85%   |
| Tumor Hypo/Acellular Stroma:                      | 0%  |
| Tumor Hypercellular Stroma:                       | 10%   |
| Necrosis:   | 5%  |
| Pathology Verification notes from H&E review:     | Tumor Stroma (Cellular): Desmoplastic reaction, Inflammatory cells; Inflammation: Mild Lymphoplasmacytic infiltrate; Other Features/Comments: Tumor area: 8 mm x 6 mm |
| CASE Diagnosis (from medical center path report): | Adenocarcinoma of ovary, papillary serous   |
| Age:  | 58  |
| Gender:   | Female  |
| Race:   | White or Caucasian  |

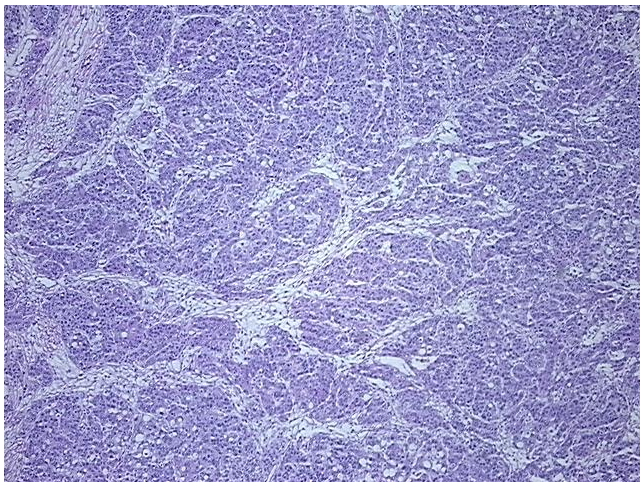


[View online »](#)

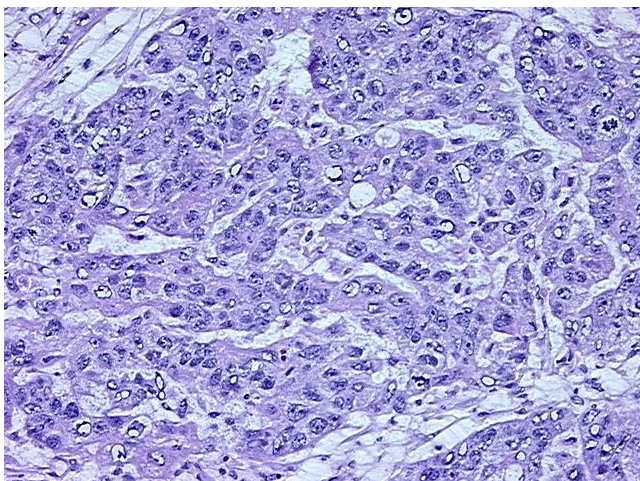
**Storage:** Store frozen tissue sections at -80°C.

**Stability:** All frozen tissue sections are stable for 1 year from date of purchase if stored at -80°C without repeated freeze/thaws.

**Product images:**



4x Image



20x Image