

Product datasheet for **CS556574**

Frozen Tissue Sections, Lung: left upper lobe

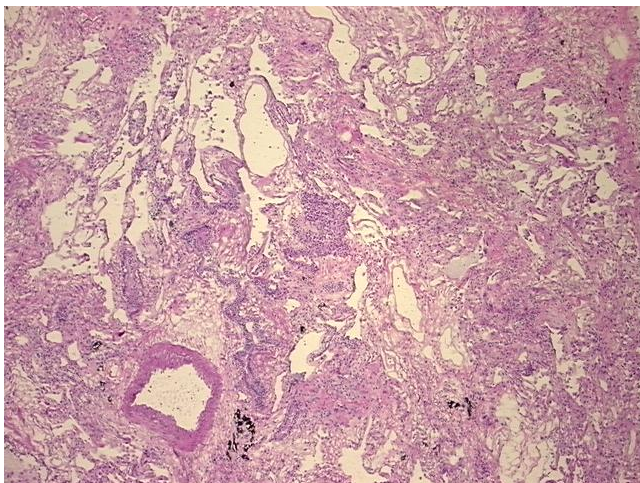
Product data:

Product Type:	Frozen Sections
Disease State:	Other Disease
Diagnosis Category:	Chronic Obstructive Pulmonary Disease (COPD)
Tissue:	Lung
Frozen Sample ID:	FR0004AE63
Case ID:	CI0000021955
Tissue of Origin:	Lung: left upper lobe
Site of Finding:	Lung: left upper lobe
Appearance:	L
Sample Diagnosis (from Pathology Verification):	Bronchitis, chronic
Normal:	0%
Lesional:	100%
Tumor:	0%
Tumor Hypo/Acellular Stroma:	0%
Tumor Hypercellular Stroma:	0%
Necrosis:	0%
Pathology Verification notes from H&E review:	Lesion (100%): Bronchitis, chronic 10%, Emphysema 90%; Other Features/Comments: No normal architecture in lesional component
CASE Diagnosis (from medical center path report):	Adenocarcinoma of lung
Age:	89
Gender:	Male
Race:	White or Caucasian

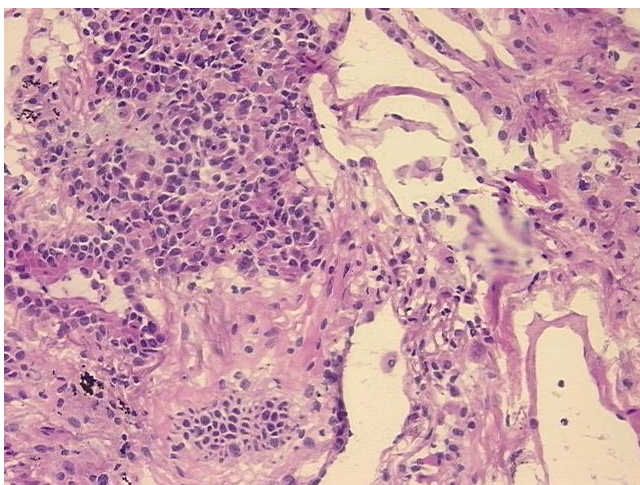


[View online »](#)

Tumor Grade:	AJCC G2: Moderately differentiated
Minimum Stage Grouping:	IIA
T (Extent of Primary Tumor):	T1
N (Lymph node metastasis):	N1
M (Distant metastasis):	MX
Diagnostic Test Results:	Verhoeff-Van Gieson ~ Elastin stain, Pleura not involved; ERBB1 ~ EGFR ~ Epidermal growth factor receptor ! by IHC, Positive, strong
Storage:	Store frozen tissue sections at -80°C.
Stability:	All frozen tissue sections are stable for 1 year from date of purchase if stored at -80°C without repeated freeze/thaws.

Product images:

4x Image



20x Image