

## Product datasheet for CS556172

### Frozen Tissue Sections, Lung: left upper lobe

#### Product data:

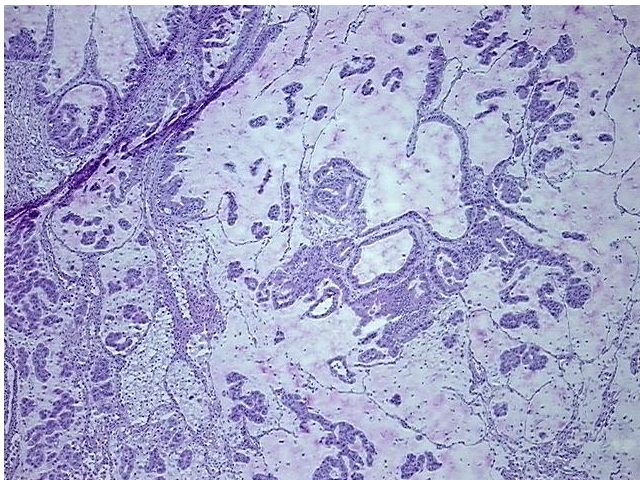
Product Type:	Frozen Sections
Disease State:	Cancer
Diagnosis Category:	Lung Cancer
Tissue:	Lung
Frozen Sample ID:	FR00046874
Case ID:	CI0000021732
Tissue of Origin:	Lung: left upper lobe
Site of Finding:	Lung: left upper lobe
Appearance:	T
Sample Diagnosis (from Pathology Verification):	Adenocarcinoma of lung
Normal:	0%
Lesional:	0%
Tumor:	60%
Tumor Hypo/Acellular Stroma:	40%
Tumor Hypercellular Stroma:	0%
Necrosis:	0%
Pathology Verification notes from H&E review:	Tumor Stroma (Hypo/Acellular): Mucin, Fibroelastosis; Other Features/Comments: Tumor area: 9 mm x 3 mm
CASE Diagnosis (from medical center path report):	Adenocarcinoma of lung
Age:	70
Gender:	Female
Race:	White or Caucasian


[View online »](#)

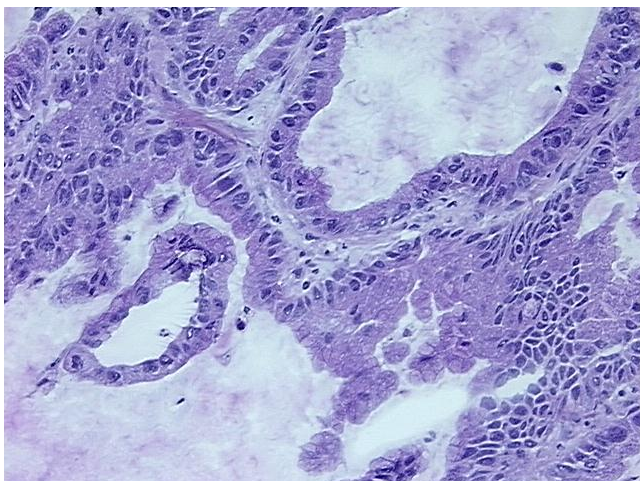
**Storage:** Store frozen tissue sections at -80°C.

**Stability:** All frozen tissue sections are stable for 1 year from date of purchase if stored at -80°C without repeated freeze/thaws.

## Product images:



4x Image



20x Image