

Product datasheet for **CS554567**

Frozen Tissue Sections, Lung: left lower lobe

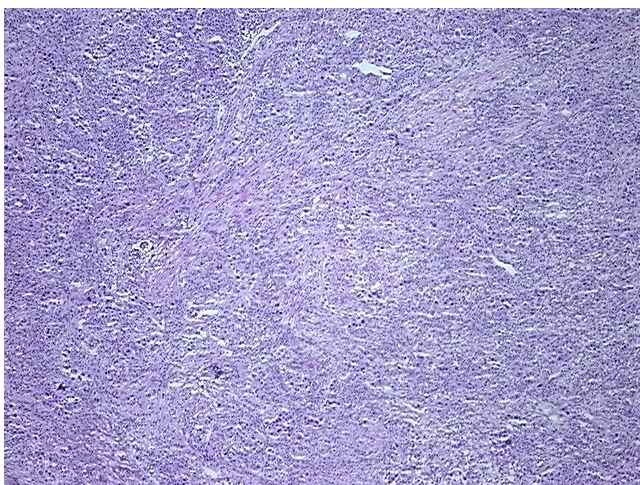
Product data:

Product Type:	Frozen Sections
Disease State:	Cancer
Diagnosis Category:	Lung Cancer
Tissue:	Lung
Frozen Sample ID:	FR00046E13
Case ID:	CI0000020967
Tissue of Origin:	Lung: left lower lobe
Site of Finding:	Lung: left lower lobe
Appearance:	T
Sample Diagnosis (from Pathology Verification):	Adenocarcinoma of lung (EGFR+)
Normal:	20%
Lesional:	0%
Tumor:	50%
Tumor Hypo/Acellular Stroma:	0%
Tumor Hypercellular Stroma:	30%
Necrosis:	0%
Pathology Verification notes from H&E review:	Tumor Stroma (Cellular): Desmoplastic reaction, Inflammatory cells; Inflammation: Moderate Lymphoplasmacytic infiltrate; Other Features/Comments: Tumor area: 6 mm x 4 mm
CASE Diagnosis (from medical center path report):	Adenocarcinoma of lung
Age:	67
Gender:	Male
Race:	White or Caucasian

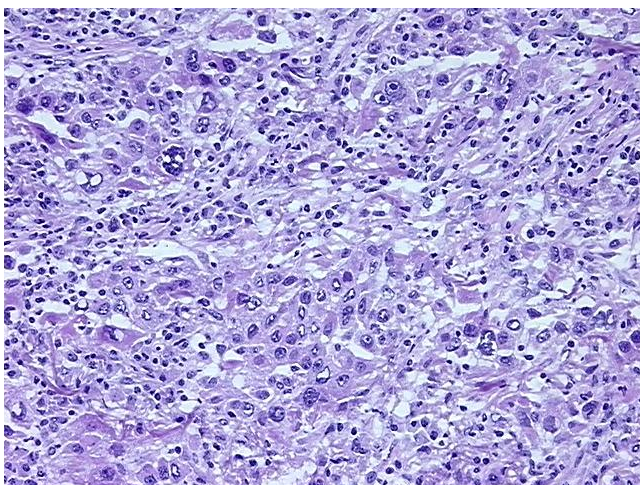

[View online »](#)

Tumor Grade:	AJCC G3: Poorly differentiated
Minimum Stage Grouping:	IIB
T (Extent of Primary Tumor):	T2
N (Lymph node metastasis):	N1
M (Distant metastasis):	MX
Diagnostic Test Results:	Other immunohistochemistry,Positive; ERBB1 ~ EGFR ~ Epidermal growth factor receptor ! by IHC,Positive, strong
Storage:	Store frozen tissue sections at -80°C.
Stability:	All frozen tissue sections are stable for 1 year from date of purchase if stored at -80°C without repeated freeze/thaws.

Product images:



4x Image



20x Image