

Product datasheet for **CS552807**

Frozen Tissue Sections, Gastroesophageal junction

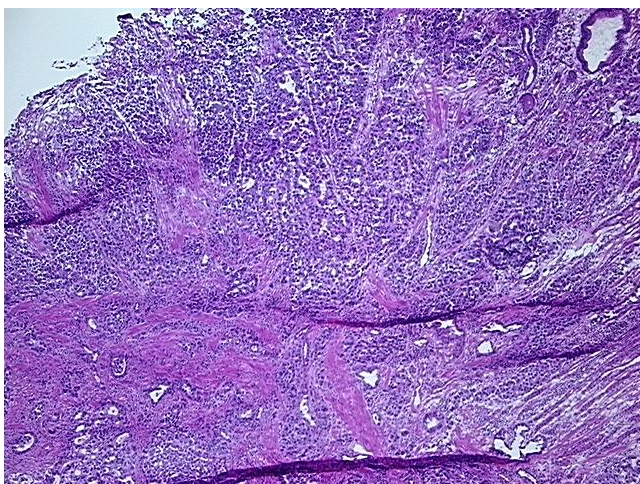
Product data:

Product Type:	Frozen Sections
Disease State:	Cancer
Diagnosis Category:	Esophageal/Gastroesophageal Cancer
Tissue:	Gastroesophageal junction
Frozen Sample ID:	FR00045832
Case ID:	CI0000020227
Tissue of Origin:	Gastroesophageal junction
Site of Finding:	Gastroesophageal junction
Appearance:	T
Sample Diagnosis (from Pathology Verification):	Adenocarcinoma of gastroesophageal junction
Normal:	55%
Lesional:	0%
Tumor:	40%
Tumor Hypo/Acellular Stroma:	0%
Tumor Hypercellular Stroma:	5%
Necrosis:	0%
Pathology Verification notes from H&E review:	Tumor Stroma (Cellular): Desmoplastic reaction; Non Tumor Structures: 30% Mucosa, 55% Muscle, 15% Submucosa; Other Features/Comments: Sample area: 10 mm x 5 mm
CASE Diagnosis (from medical center path report):	Adenocarcinoma of gastroesophageal junction
Age:	72
Gender:	Female
Race:	White or Caucasian

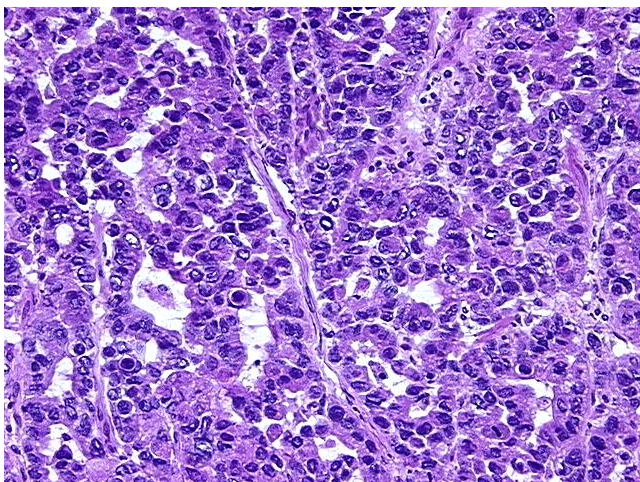


[View online »](#)

Tumor Grade:	AJCC G2: Moderately differentiated
Minimum Stage Grouping:	IV
T (Extent of Primary Tumor):	T3
N (Lymph node metastasis):	N3
M (Distant metastasis):	MX
Storage:	Store frozen tissue sections at -80°C.
Stability:	All frozen tissue sections are stable for 1 year from date of purchase if stored at -80°C without repeated freeze/thaws.

Product images:

4x Image



20x Image