

## Product datasheet for **CS552578**

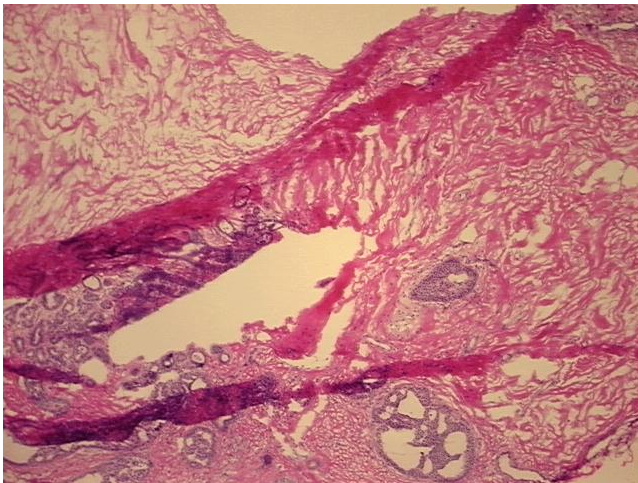
### Frozen Tissue Sections, Breast, right

#### Product data:

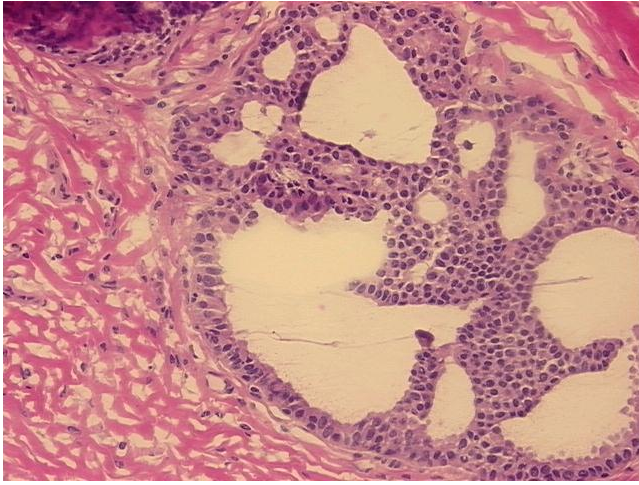
<b>Product Type:</b>	Frozen Sections
<b>Disease State:</b>	Other Disease
<b>Diagnosis Category:</b>	Hyperplasia
<b>Tissue:</b>	Breast
<b>Frozen Sample ID:</b>	FR000454A5
<b>Case ID:</b>	CI0000020169
<b>Tissue of Origin:</b>	Breast, right
<b>Site of Finding:</b>	Breast, right
<b>Appearance:</b>	L
<b>Sample Diagnosis (from Pathology Verification):</b>	Ductal hyperplasia of breast
<b>Normal:</b>	70%
<b>Lesional:</b>	30%
<b>Tumor:</b>	0%
<b>Tumor Hypo/Acellular Stroma:</b>	0%
<b>Tumor Hypercellular Stroma:</b>	0%
<b>Necrosis:</b>	0%
<b>Pathology Verification notes from H&amp;E review:</b>	Non Tumor Structures: 30% Glandular epithelium, 50% Stroma, 20% Adipose tissue



<b>CASE Diagnosis (from medical center path report):</b>	Adenocarcinoma of breast, ductal
<b>Age:</b>	80
<b>Gender:</b>	Female
<b>Race:</b>	White or Caucasian
<b>Tumor Grade:</b>	Nottingham GI: 3-5 points Low combined grade (favorable)
<b>Minimum Stage Grouping:</b>	IIB
<b>T (Extent of Primary Tumor):</b>	T2
<b>N (Lymph node metastasis):</b>	N1mi
<b>M (Distant metastasis):</b>	MX
<b>Diagnostic Test Results:</b>	Progesterone receptor ~ PR ! by IHC,Positive; Estrogen receptor ~ ER ! by IHC,Positive; HER2 ~ ERBB2 ~ Neu ! by IHC,Negative
<b>Storage:</b>	Store frozen tissue sections at -80°C.
<b>Stability:</b>	All frozen tissue sections are stable for 1 year from date of purchase if stored at -80°C without repeated freeze/thaws.

**Product images:**

4x Image



20x Image