

## Product datasheet for CS551949

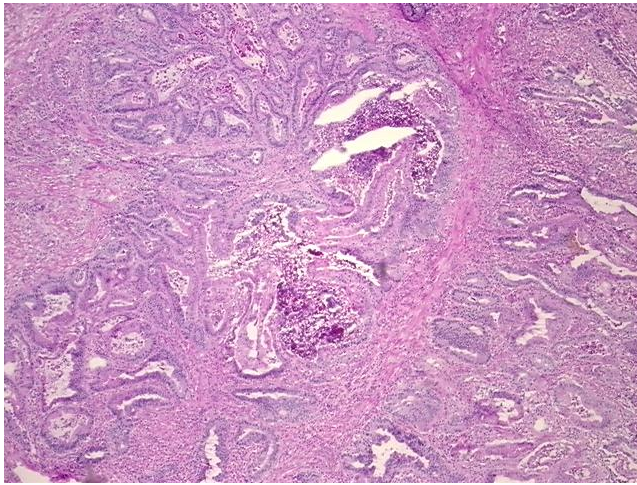
### Frozen Tissue Sections, Colon: right

#### Product data:

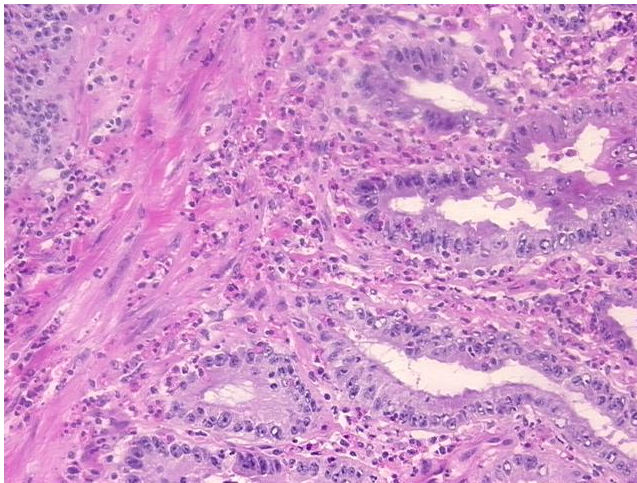
|   |                              |
|---|------------------------------|
| Product Type:                                     | Frozen Sections              |
| Disease State:                                    | Cancer                       |
| Diagnosis Category:                               | Colorectal Cancer            |
| Tissue:   | Colon                        |
| Frozen Sample ID:                                 | FR5B347452                   |
| Case ID:  | CI0000020008                 |
| Tissue of Origin:                                 | Colon: right                 |
| Site of Finding:                                  | Colon: right                 |
| Appearance:                                       | T                            |
| Sample Diagnosis (from Pathology Verification):   | Adenocarcinoma of colon      |
| Normal:   | 0%                           |
| Lesional:   | 0%                           |
| Tumor:  | 55%                          |
| Tumor Hypo/Acellular Stroma:                      | 15%                          |
| Tumor Hypercellular Stroma:                       | 30%                          |
| Necrosis:   | 0%                           |
| CASE Diagnosis (from medical center path report): | Adenocarcinoma of colon      |
| Age:  | 66                           |
| Gender:   | Male                         |
| Race:   | White or Caucasian           |
| Tumor Grade:                                      | AJCC G1: Well differentiated |


[View online »](#)

|                              |  |
|------------------------------|--|
| Minimum Stage Grouping:      | IV   |
| T (Extent of Primary Tumor): | T3   |
| N (Lymph node metastasis):   | N0   |
| M (Distant metastasis):      | M1   |
| Storage:                     | Store frozen tissue sections at -80°C.   |
| Stability:                   | All frozen tissue sections are stable for 1 year from date of purchase if stored at -80°C without repeated freeze/thaws. |

**Product images:**


4x Image



20x Image