

## Product datasheet for **CS551604**

### Frozen Tissue Sections, Skin

#### Product data:

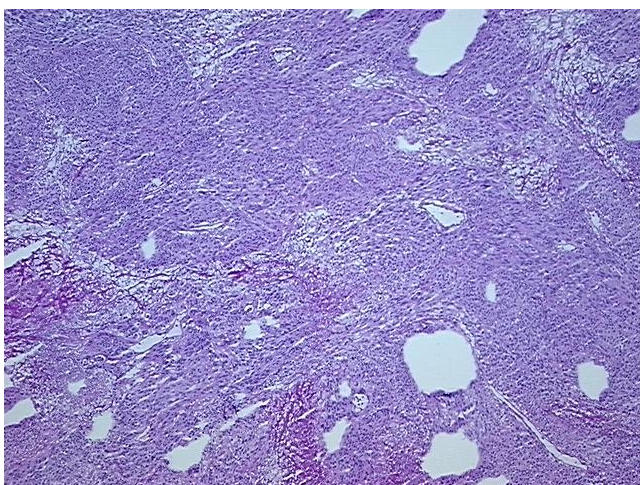
|   |                                |
|---|--------------------------------|
| Product Type:                                     | Frozen Sections                |
| Disease State:                                    | Cancer                         |
| Diagnosis Category:                               | Melanoma                       |
| Tissue:   | Skin                           |
| Frozen Sample ID:                                 | FR00043ACC                     |
| Case ID:  | CI0000019897                   |
| Tissue of Origin:                                 | Skin                           |
| Site of Finding:                                  | Lung                           |
| Appearance:                                       | T                              |
| Sample Diagnosis (from Pathology Verification):   | Malignant melanoma, metastatic |
| Normal:   | 0%                             |
| Lesional:   | 0%                             |
| Tumor:  | 75%                            |
| Tumor Hypo/Acellular Stroma:                      | 0%                             |
| Tumor Hypercellular Stroma:                       | 0%                             |
| Necrosis:   | 25%                            |
| CASE Diagnosis (from medical center path report): | Malignant melanoma, metastatic |
| Age:  | 64                             |
| Gender:   | Female                         |
| Race:   | White or Caucasian             |
| Tumor Grade:                                      | Not Reported                   |



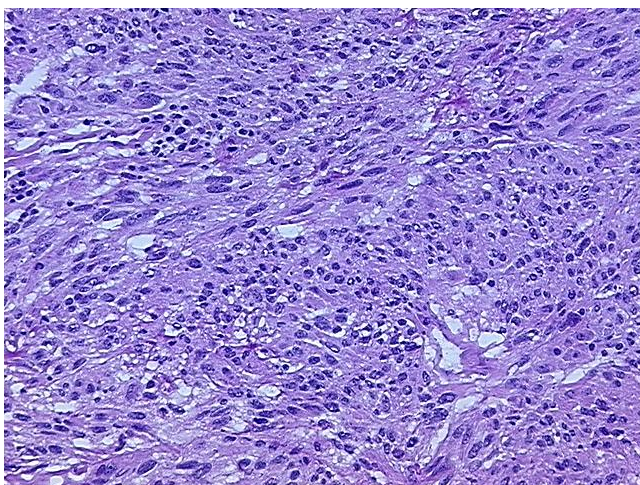
[View online »](#)

|                              |  |
|------------------------------|--|
| Minimum Stage Grouping:      | IV   |
| T (Extent of Primary Tumor): | T2   |
| N (Lymph node metastasis):   | NX   |
| M (Distant metastasis):      | M1b  |
| Diagnostic Test Results:     | CD227 ~ MUC1 ~ EMA ~ CA15-3 ! by IHC,Negative; Cytokeratin (Pan) ~ Keratin, Pan ! by IHC,Negative; Vimentin ~ VIM ! by IHC,Positive; S100 protein,Positive; HMB45 melanoma antigen ~ GP100 ! by IHC,Positive; BCL2 oncoprotein ! by IHC,Positive |
| Storage:                     | Store frozen tissue sections at -80°C.   |
| Stability:                   | All frozen tissue sections are stable for 1 year from date of purchase if stored at -80°C without repeated freeze/thaws.   |

### Product images:



4x Image



20x Image