

## Product datasheet for CS551524

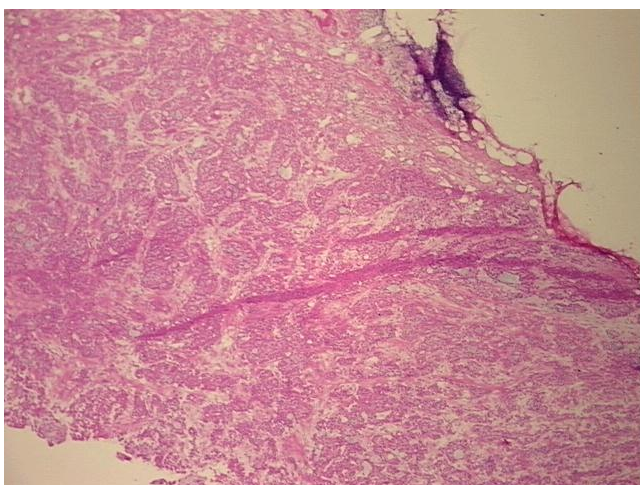
### Frozen Tissue Sections, Breast, left medial

#### Product data:

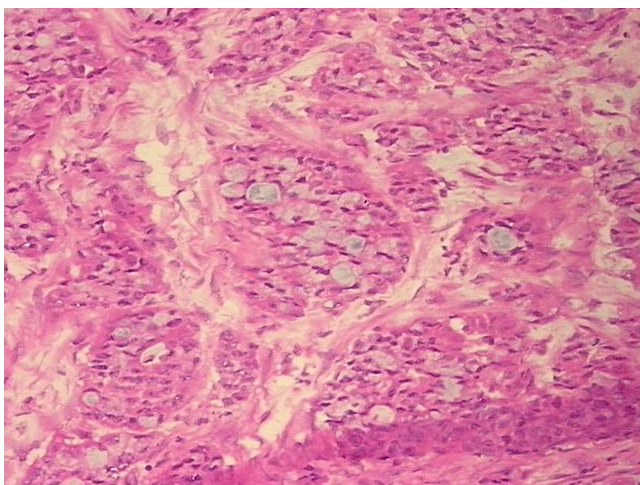
Product Type:	Frozen Sections
Disease State:	Cancer
Diagnosis Category:	Breast Cancer
Tissue:	Breast
Frozen Sample ID:	FR000438EF
Case ID:	CI0000019876
Tissue of Origin:	Breast, left medial
Site of Finding:	Breast, left medial
Appearance:	T
Sample Diagnosis (from Pathology Verification):	Adenocarcinoma of breast, ductal
Normal:	0%
Lesional:	0%
Tumor:	90%
Tumor Hypo/Acellular Stroma:	5%
Tumor Hypercellular Stroma:	5%
Necrosis:	0%
CASE Diagnosis (from medical center path report):	Adenocarcinoma of breast, ductal
Age:	70
Gender:	Female
Race:	White or Caucasian
Tumor Grade:	Nottingham G1: 3-5 points Low combined grade (favorable)


[View online »](#)

Minimum Stage Grouping:	IIIA
T (Extent of Primary Tumor):	T2
N (Lymph node metastasis):	N2a
M (Distant metastasis):	MX
Diagnostic Test Results:	Progesterone receptor ~ PR ! by IHC,Positive; Estrogen receptor ~ ER ! by IHC,Positive; ERBB2,Not amplified; HER2 ~ ERBB2 ~ Neu ! by IHC,Positive, weak
Storage:	Store frozen tissue sections at -80°C.
Stability:	All frozen tissue sections are stable for 1 year from date of purchase if stored at -80°C without repeated freeze/thaws.

**Product images:**


4x Image



20x Image