

Product datasheet for **CS550821**

Frozen Tissue Sections, Lymphoid tissue

Product data:

Product Type:	Frozen Sections
Disease State:	Cancer
Diagnosis Category:	Leukemia
Tissue:	Lymphoid tissue
Frozen Sample ID:	FR00042E98
Case ID:	CI0000019668
Tissue of Origin:	Lymphoid tissue
Site of Finding:	Spleen
Appearance:	Tumor
Sample Diagnosis (from Pathology Verification):	Leukemia, hairy cell
Normal:	0%
Lesional:	0%
Tumor:	80%
Tumor Hypo/Acellular Stroma:	0%
Tumor Hypercellular Stroma:	20%
Necrosis:	0%
CASE Diagnosis (from medical center path report):	Leukemia, hairy cell
Age:	49
Gender:	Male
Tumor Grade:	Not Reported
Minimum Stage Grouping:	I

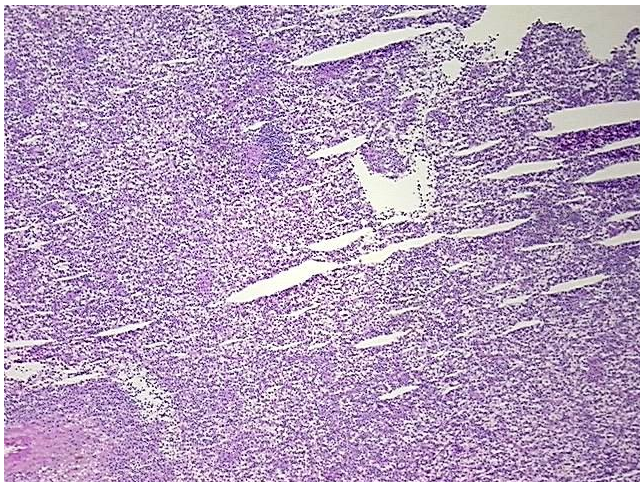


[View online »](#)

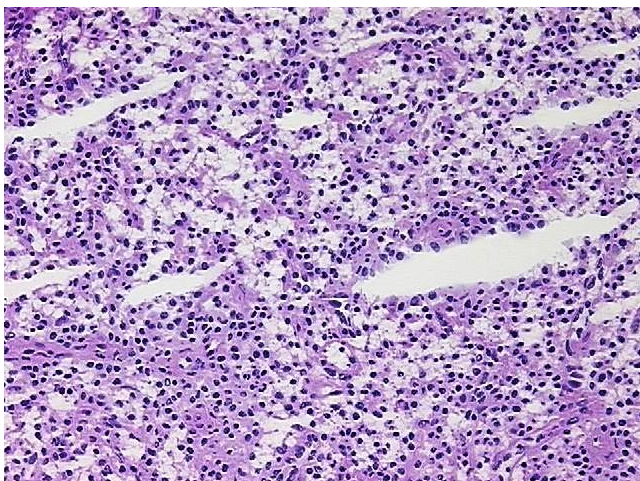
Storage: Store frozen tissue sections at -80°C.

Stability: All frozen tissue sections are stable for 1 year from date of purchase if stored at -80°C without repeated freeze/thaws.

Product images:



4x Image



20x Image