

Product datasheet for **CS550820**

Frozen Tissue Sections, Lymphoid tissue

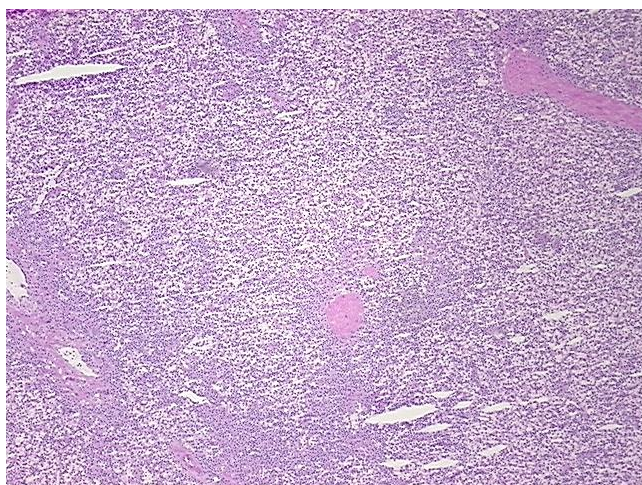
Product data:

Product Type:	Frozen Sections
Disease State:	Cancer
Diagnosis Category:	Leukemia
Tissue:	Lymphoid tissue
Frozen Sample ID:	FR00042E97
Case ID:	CI0000019668
Tissue of Origin:	Lymphoid tissue
Site of Finding:	Spleen
Appearance:	T
Sample Diagnosis (from Pathology Verification):	Leukemia, hairy cell
Normal:	0%
Lesional:	0%
Tumor:	80%
Tumor Hypo/Acellular Stroma:	0%
Tumor Hypercellular Stroma:	20%
Necrosis:	0%
CASE Diagnosis (from medical center path report):	Leukemia, hairy cell
Age:	49
Gender:	Male
Race:	White or Caucasian
Tumor Grade:	Not Reported

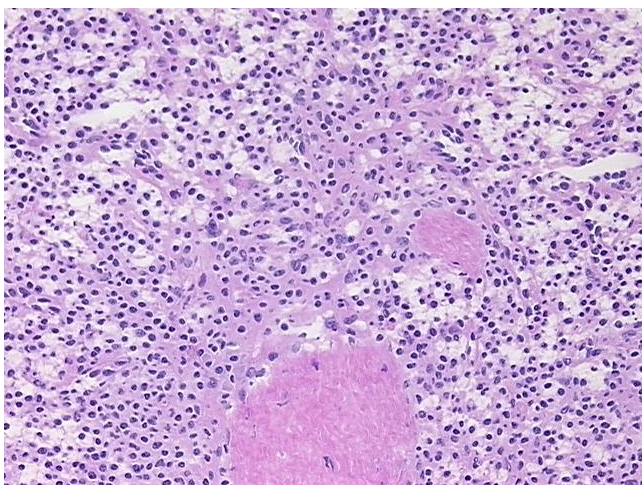


[View online »](#)

Minimum Stage Grouping:	I
T (Extent of Primary Tumor):	Not applicable
N (Lymph node metastasis):	Not applicable
M (Distant metastasis):	Not applicable
Diagnostic Test Results:	Other immunophenotype tests,Positive; Other immunophenotype tests,Positive; Other immunophenotype tests,Positive; CD20 ~ B1 ~ Leu16 ! by IHC,Positive, strong; CD79a ~ Ig alpha ! by IHC,Positive, strong
Storage:	Store frozen tissue sections at -80°C.
Stability:	All frozen tissue sections are stable for 1 year from date of purchase if stored at -80°C without repeated freeze/thaws.

Product images:

4x Image



20x Image