

Product datasheet for **CS549865**

Frozen Tissue Sections, Endometrium

Product data:

Product Type:	Frozen Sections
Disease State:	Cancer
Diagnosis Category:	Endometrial Cancer
Tissue:	Endometrium
Frozen Sample ID:	FR0003FE8A
Case ID:	CI0000019535
Tissue of Origin:	Endometrium
Site of Finding:	Omentum
Appearance:	T
Sample Diagnosis (from Pathology Verification):	Adenocarcinoma of endometrium, metastatic
Normal:	30%
Lesional:	0%
Tumor:	20%
Tumor Hypo/Acellular Stroma:	49%
Tumor Hypercellular Stroma:	0%
Necrosis:	1%
Pathology Verification notes from H&E review:	Tumor Stroma (Hypo/Acellular): Desmoplastic reaction; Other Features/Comments: Tumor area: 5mm x 4 mm
CASE Diagnosis (from medical center path report):	Adenocarcinoma of endometrium
Age:	65
Gender:	Female
Race:	Black or African American

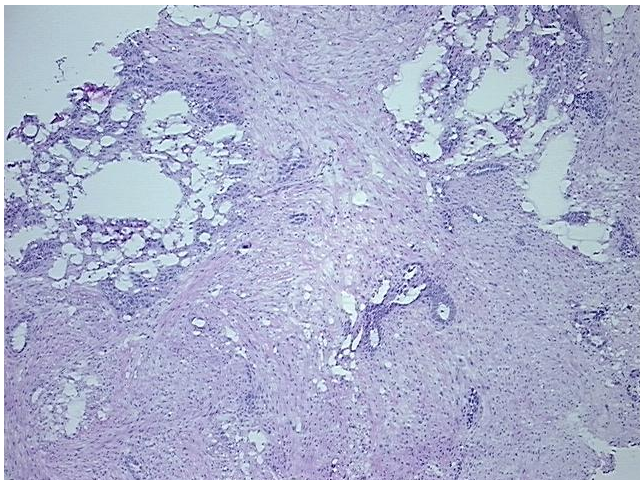


[View online »](#)

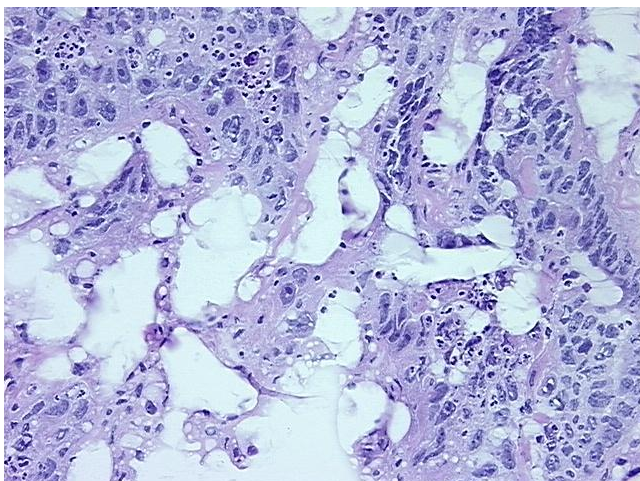
Storage: Store frozen tissue sections at -80°C.

Stability: All frozen tissue sections are stable for 1 year from date of purchase if stored at -80°C without repeated freeze/thaws.

Product images:



4x Image



20x Image