

Product datasheet for **CS549212**

Frozen Tissue Sections, Endometrium

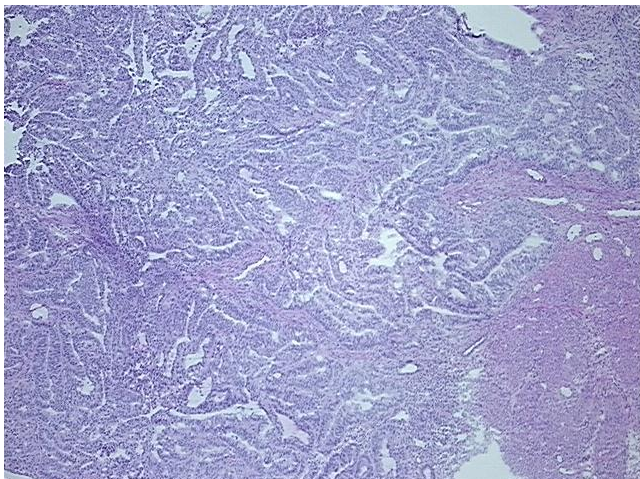
Product data:

| | |
|---|--|
| Product Type: | Frozen Sections |
| Disease State: | Cancer |
| Diagnosis Category: | Endometrial Cancer |
| Tissue: | Endometrium |
| Frozen Sample ID: | FR00041CD2 |
| Case ID: | CI0000019371 |
| Tissue of Origin: | Endometrium |
| Site of Finding: | Uterus |
| Appearance: | T |
| Sample Diagnosis (from Pathology Verification): | Adenocarcinoma of endometrium |
| Normal: | 55% |
| Lesional: | 0% |
| Tumor: | 40% |
| Tumor Hypo/Acellular Stroma: | 0% |
| Tumor Hypercellular Stroma: | 5% |
| Necrosis: | 0% |
| Pathology Verification notes from H&E review: | Tumor Stroma (Cellular): Desmoplastic reaction; Non Tumor Structures: 5% Glands, 90% Myometrium, 5% Stroma; Other Features/Comments: Tumor area: 5 mm x 2 mm |
| Age: | 65 |
| Gender: | Female |
| Race: | Not reported |
| Storage: | Store frozen tissue sections at -80°C. |
| Stability: | All frozen tissue sections are stable for 1 year from date of purchase if stored at -80°C without repeated freeze/thaws. |

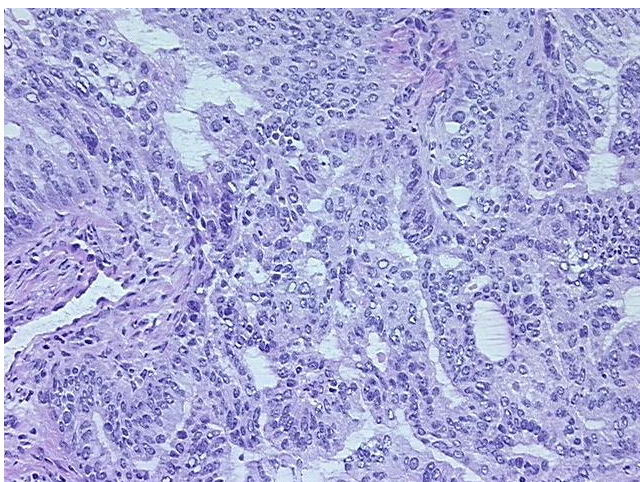


[View online »](#)

Product images:



4x Image



20x Image