

## Product datasheet for CS549165

### Frozen Tissue Sections, Soft tissue

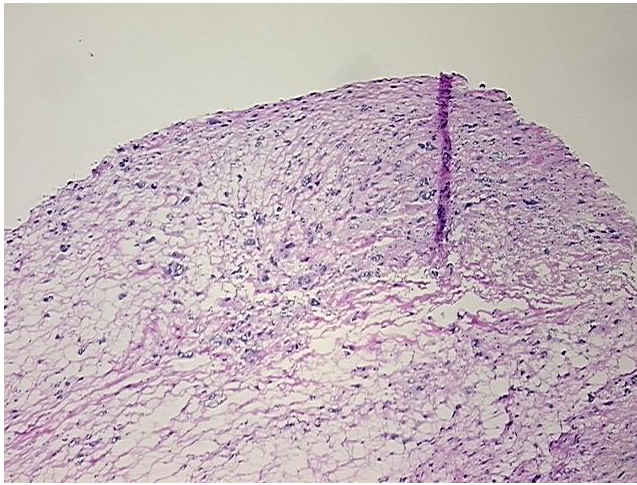
#### Product data:

|   |                                 |
|---|---------------------------------|
| Product Type:                                     | Frozen Sections                 |
| Disease State:                                    | Cancer                          |
| Diagnosis Category:                               | Sarcoma                         |
| Tissue:   | Soft tissue                     |
| Frozen Sample ID:                                 | FR000454F2                      |
| Case ID:  | CI0000019365                    |
| Tissue of Origin:                                 | Soft tissue                     |
| Site of Finding:                                  | Thigh                           |
| Appearance:                                       | T                               |
| Sample Diagnosis (from Pathology Verification):   | Myxofibrosarcoma of soft tissue |
| Normal:   | 0%                              |
| Lesional:   | 0%                              |
| Tumor:  | 40%                             |
| Tumor Hypo/Acellular Stroma:                      | 40%                             |
| Tumor Hypercellular Stroma:                       | 20%                             |
| Necrosis:   | 0%                              |
| CASE Diagnosis (from medical center path report): | Myxofibrosarcoma of soft tissue |
| Age:  | 79                              |
| Gender:   | Female                          |
| Race:   | White or Caucasian              |
| Tumor Grade:                                      | AJCC G3: Poorly differentiated  |

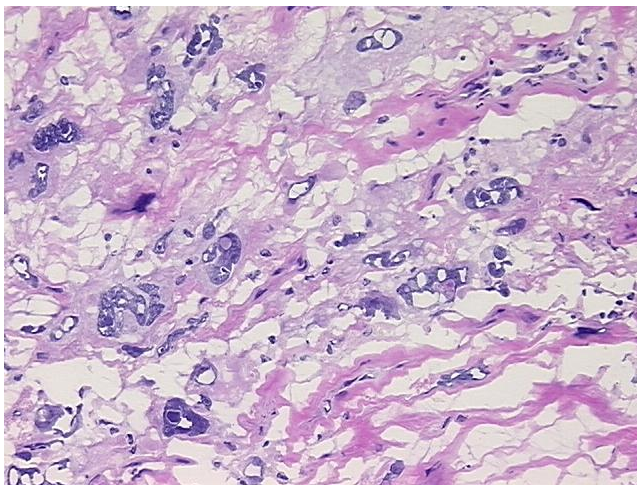


[View online »](#)

|                              |  |
|------------------------------|--|
| Minimum Stage Grouping:      | III  |
| T (Extent of Primary Tumor): | T2b  |
| N (Lymph node metastasis):   | NX   |
| M (Distant metastasis):      | MX   |
| Storage:                     | Store frozen tissue sections at -80°C.   |
| Stability:                   | All frozen tissue sections are stable for 1 year from date of purchase if stored at -80°C without repeated freeze/thaws. |

**Product images:**

4x Image



20x Image