

## Product datasheet for **CS548404**

### Frozen Tissue Sections, Smooth muscle

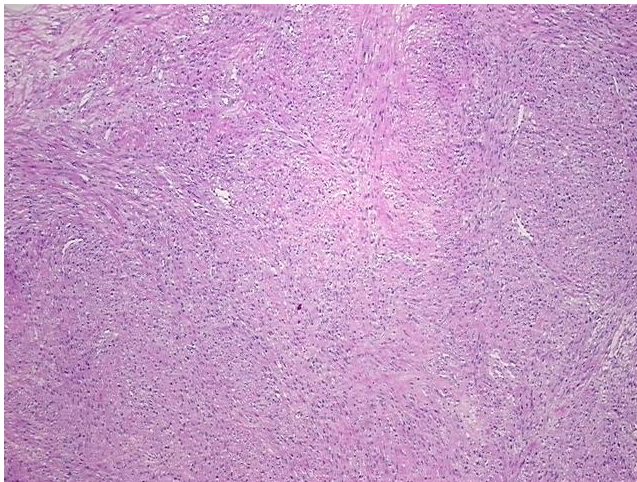
#### Product data:

Product Type:	Frozen Sections
Disease State:	Cancer
Diagnosis Category:	Sarcoma
Tissue:	Muscle
Frozen Sample ID:	FR00044291
Case ID:	CI0000019193
Tissue of Origin:	Smooth muscle
Site of Finding:	Pelvis
Appearance:	T
Sample Diagnosis (from Pathology Verification):	Leiomyosarcoma, recurrent
Normal:	0%
Lesional:	0%
Tumor:	90%
Tumor Hypo/Acellular Stroma:	5%
Tumor Hypercellular Stroma:	0%
Necrosis:	5%
CASE Diagnosis (from medical center path report):	Leiomyosarcoma, recurrent
Age:	53
Gender:	Female
Race:	Black or African American
Tumor Grade:	AJCC G1: Well differentiated

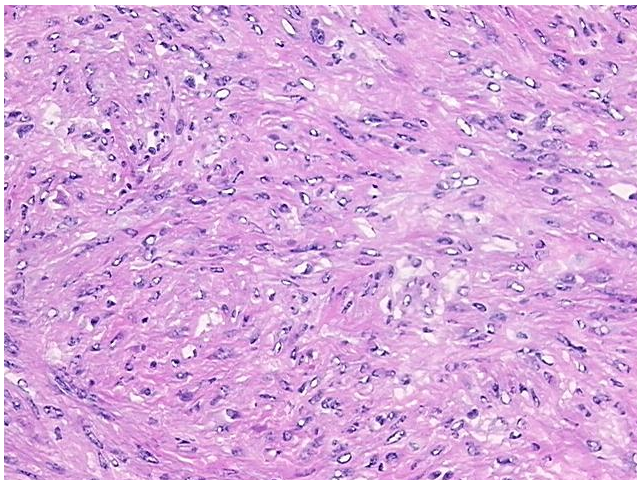


[View online »](#)

Minimum Stage Grouping:	Not Reported
T (Extent of Primary Tumor):	Not Reported
N (Lymph node metastasis):	Not Reported
M (Distant metastasis):	Not Reported
Diagnostic Test Results:	Progesterone receptor ~ PR ! by IHC,Positive; Estrogen receptor ~ ER ! by IHC,Positive, strong
Storage:	Store frozen tissue sections at -80°C.
Stability:	All frozen tissue sections are stable for 1 year from date of purchase if stored at -80°C without repeated freeze/thaws.

**Product images:**

4x Image



20x Image