

## Product datasheet for **CS546823**

### Frozen Tissue Sections, Breast

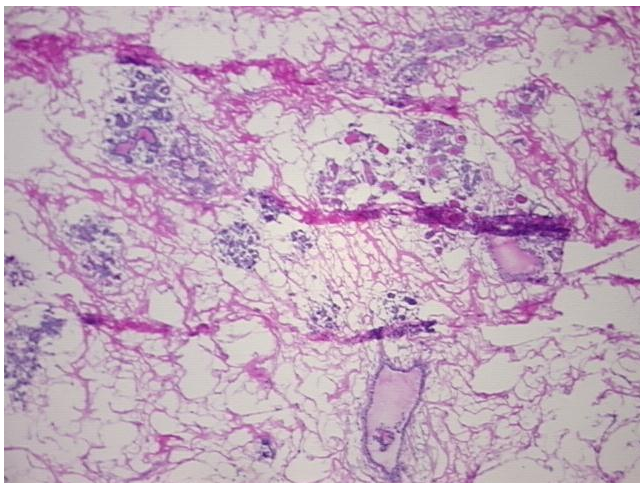
#### Product data:

Product Type:	Frozen Sections
Disease State:	Other Disease
Diagnosis Category:	Fibrocystic Breast
Tissue:	Breast
Frozen Sample ID:	FR5B3471AC
Case ID:	CI0000018906
Tissue of Origin:	Breast
Site of Finding:	Breast
Appearance:	L
Sample Diagnosis (from Pathology Verification):	Fibrocystic changes to breast
Normal:	0%
Lesional:	100%
Tumor:	0%
Tumor Hypo/Acellular Stroma:	0%
Tumor Hypercellular Stroma:	0%
Necrosis:	0%
Pathology Verification notes from H&E review:	Non Tumor Structures: 25% Glandular epithelium, 75% Stroma
CASE Diagnosis (from medical center path report):	Adenocarcinoma of breast, ductal
Age:	73
Gender:	Female
Race:	White or Caucasian

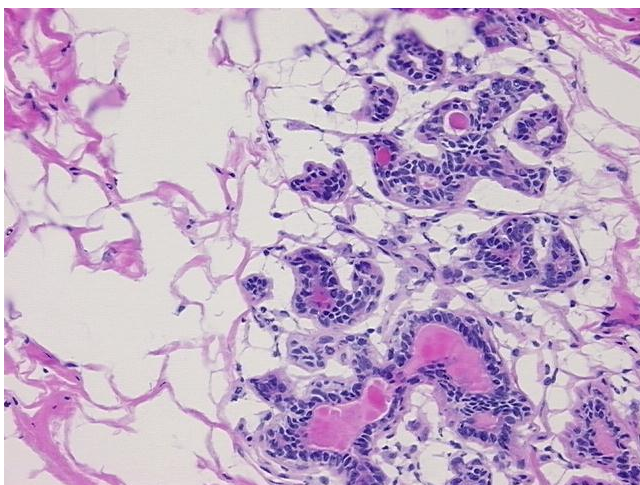


[View online »](#)

<b>Tumor Grade:</b>	Nottingham G3: 8-9 points High combined grade (unfavorable)
<b>Minimum Stage Grouping:</b>	IIIB
<b>T (Extent of Primary Tumor):</b>	T4
<b>N (Lymph node metastasis):</b>	N2
<b>M (Distant metastasis):</b>	MX
<b>Diagnostic Test Results:</b>	Progesterone receptor ~ PR ! by IHC,Negative; Estrogen receptor ~ ER ! by IHC,Negative; HER2 ~ ERBB2 ~ Neu ! by IHC,Negative
<b>Storage:</b>	Store frozen tissue sections at -80°C.
<b>Stability:</b>	All frozen tissue sections are stable for 1 year from date of purchase if stored at -80°C without repeated freeze/thaws.

**Product images:**

4x Image



20x Image