

Product datasheet for **CS545573**

Frozen Tissue Sections, Lung: right upper lobe

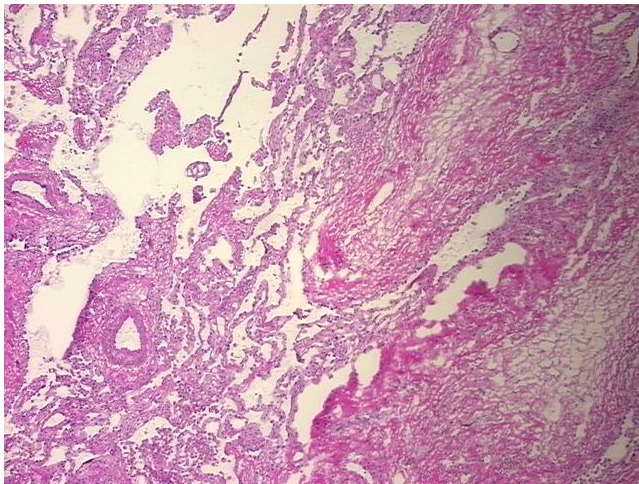
Product data:

Product Type:	Frozen Sections
Disease State:	Other Disease
Diagnosis Category:	Fibrosis
Tissue:	Lung
Frozen Sample ID:	FR0003F49D
Case ID:	CI0000018479
Tissue of Origin:	Lung: right upper lobe
Site of Finding:	Lung: right upper lobe
Appearance:	L
Sample Diagnosis (from Pathology Verification):	Fibrosis
Normal:	40%
Lesional:	60%
Tumor:	0%
Tumor Hypo/Acellular Stroma:	0%
Tumor Hypercellular Stroma:	0%
Necrosis:	0%
Pathology Verification notes from H&E review:	Lesion (60%): Visceral Pleural fibrosis 100%; Non Tumor Structures: 95% Alveoli, 5% Fibrovascular septa; Other Features/Comments: No features of asthma noted
CASE Diagnosis (from medical center path report):	Adenocarcinoma of lung
Age:	53
Gender:	Female
Race:	White or Caucasian

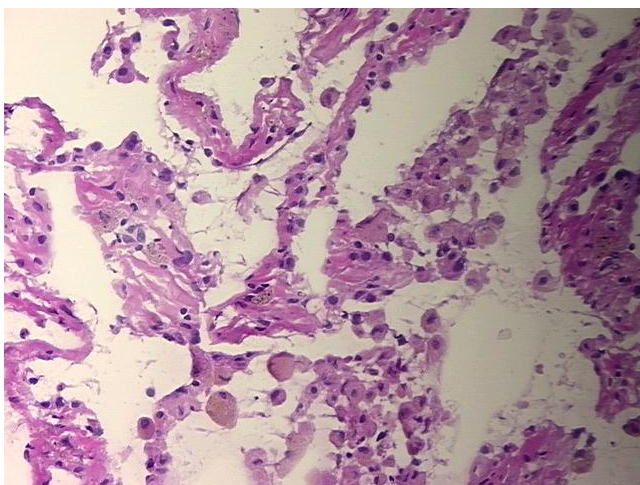


[View online »](#)

Tumor Grade:	AJCC G2: Moderately differentiated
Minimum Stage Grouping:	IA
T (Extent of Primary Tumor):	T1
N (Lymph node metastasis):	N0
M (Distant metastasis):	MX
Diagnostic Test Results:	Verhoeff-Van Gieson ~ Elastin stain, Pleura not involved; Cytokeratin (Pan) ~ Keratin, Pan ! by IHC, Positive; ERBB1 ~ EGFR ~ Epidermal growth factor receptor ! by IHC, Negative; Cytokeratin 7 ~ CK7 ! by IHC, Positive; Cytokeratin 20 ~ CK20 ! by I
Storage:	Store frozen tissue sections at -80°C.
Stability:	All frozen tissue sections are stable for 1 year from date of purchase if stored at -80°C without repeated freeze/thaws.

Product images:

4x Image



20x Image