

## Product datasheet for **CS545233**

### Frozen Tissue Sections, Unknown tissue consistent with neuroendocrine origin

#### Product data:

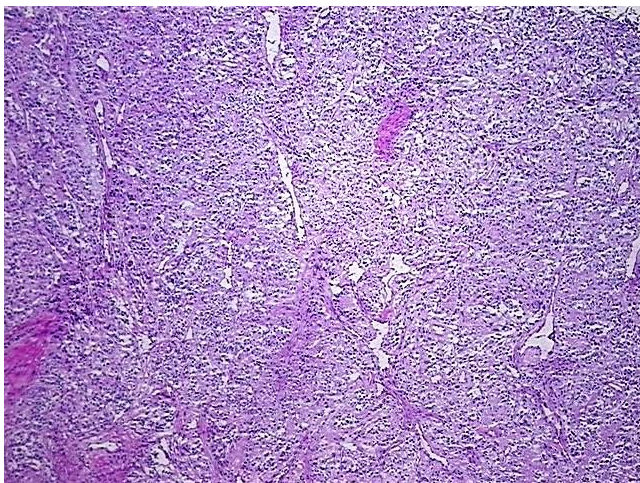
Product Type:	Frozen Sections
Disease State:	Other Disease
Tissue:	Unknown tissue
Frozen Sample ID:	FR0003F255
Case ID:	CI0000018353
Tissue of Origin:	Unknown tissue consistent with neuroendocrine origin
Site of Finding:	Lung: right lower lobe
Appearance:	Tumor
Sample Diagnosis (from Pathology Verification):	Paranglioma of lung, metastatic
Normal:	0%
Lesional:	0%
Tumor:	85%
Tumor Hypo/Acellular Stroma:	0%
Tumor Hypercellular Stroma:	15%
Necrosis:	0%
CASE Diagnosis (from medical center path report):	Tumor of unknown origin, neuroendocrine, metastatic
Age:	71
Gender:	Female
Tumor Grade:	Not Reported
Minimum Stage Grouping:	Not Reported
Storage:	Store frozen tissue sections at -80°C.



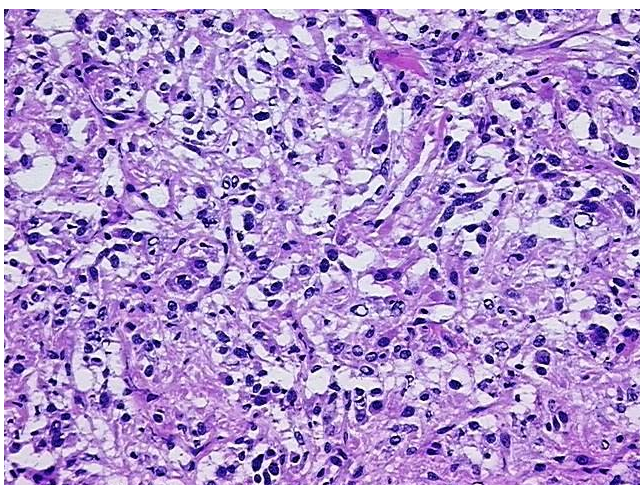
[View online »](#)

**Stability:** All frozen tissue sections are stable for 1 year from date of purchase if stored at -80°C without repeated freeze/thaws.

**Product images:**



4x Image



20x Image