

Product datasheet for **CS545232**

Frozen Tissue Sections, Unknown tissue consistent with neuroendocrine origin

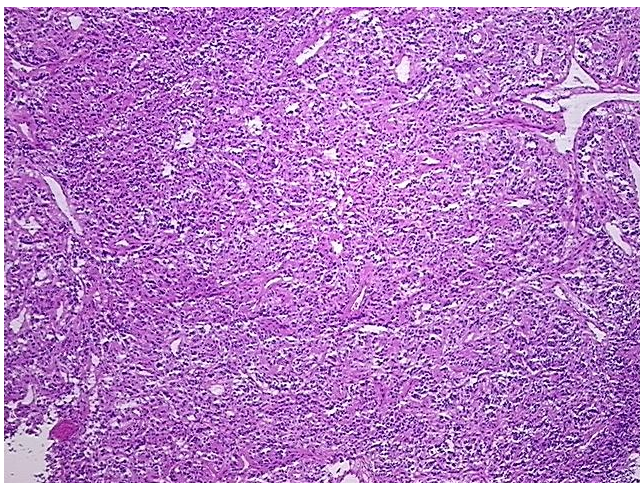
Product data:

Product Type:	Frozen Sections
Disease State:	Cancer
Diagnosis Category:	Carcinoid/Neuroendocrine Tumors
Tissue:	Unknown origin
Frozen Sample ID:	FR0003F254
Case ID:	CI0000018353
Tissue of Origin:	Unknown tissue consistent with neuroendocrine origin
Site of Finding:	Lung: right lower lobe
Appearance:	T
Sample Diagnosis (from Pathology Verification):	Paranglioma of lung, metastatic
Normal:	0%
Lesional:	0%
Tumor:	95%
Tumor Hypo/Acellular Stroma:	0%
Tumor Hypercellular Stroma:	5%
Necrosis:	0%
CASE Diagnosis (from medical center path report):	Tumor of unknown origin, neuroendocrine, metastatic
Age:	71
Gender:	Female
Race:	Black or African American
Tumor Grade:	Not Reported

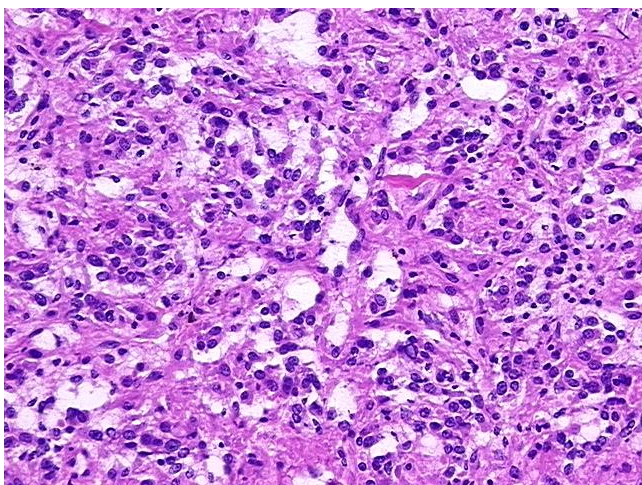


[View online »](#)

Minimum Stage Grouping:	Not Reported
T (Extent of Primary Tumor):	Not Reported
N (Lymph node metastasis):	Not Reported
M (Distant metastasis):	Not Reported
Diagnostic Test Results:	Neuron specific enolase ~ NSE ! by IHC,Positive; S100 protein,Negative; Synaptophysin ~ SYN ! by IHC,Positive; Cytokeratin 7 ~ CK7 ! by IHC,Negative; Cytokeratin 20 ~ CK20 ! by IHC,Negative; Cytokeratin CAM5.2 ~ CAM5.2 ! by IHC,Negative; Chromog
Storage:	Store frozen tissue sections at -80°C.
Stability:	All frozen tissue sections are stable for 1 year from date of purchase if stored at -80°C without repeated freeze/thaws.

Product images:

4x Image



20x Image