

Product datasheet for **CS545053**

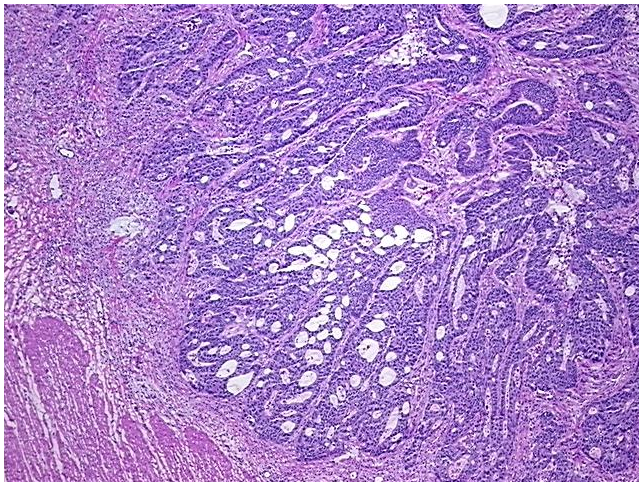
Frozen Tissue Sections, Colon

Product data:

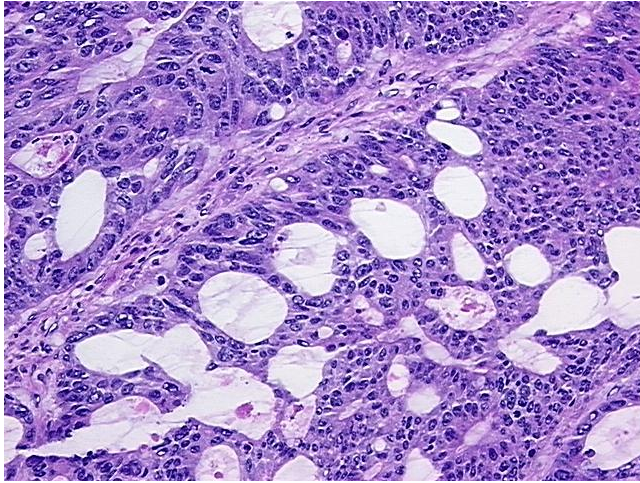
Product Type:	Frozen Sections
Disease State:	Cancer
Diagnosis Category:	Colorectal Cancer
Tissue:	Colon
Frozen Sample ID:	FR5B344E59
Case ID:	CI0000018261
Tissue of Origin:	Colon
Site of Finding:	Colon
Appearance:	T
Sample Diagnosis (from Pathology Verification):	Adenocarcinoma of colon
Normal:	50%
Lesional:	0%
Tumor:	45%
Tumor Hypo/Acellular Stroma:	0%
Tumor Hypercellular Stroma:	5%
Necrosis:	0%
Pathology Verification notes from H&E review:	Tumor Stroma (Cellular): Desmoplastic reaction; Non Tumor Structures: 20% Submucosa, 80% Muscle



CASE Diagnosis (from medical center path report):	Adenocarcinoma of colon
Age:	75
Gender:	Male
Race:	White or Caucasian
Tumor Grade:	AJCC G2: Moderately differentiated
Minimum Stage Grouping:	IIA
T (Extent of Primary Tumor):	T3
N (Lymph node metastasis):	N0
M (Distant metastasis):	MX
Storage:	Store frozen tissue sections at -80°C.
Stability:	All frozen tissue sections are stable for 1 year from date of purchase if stored at -80°C without repeated freeze/thaws.

Product images:

4x Image



20x Image