

## Product datasheet for **CS544941**

### Frozen Tissue Sections, Thyroid gland

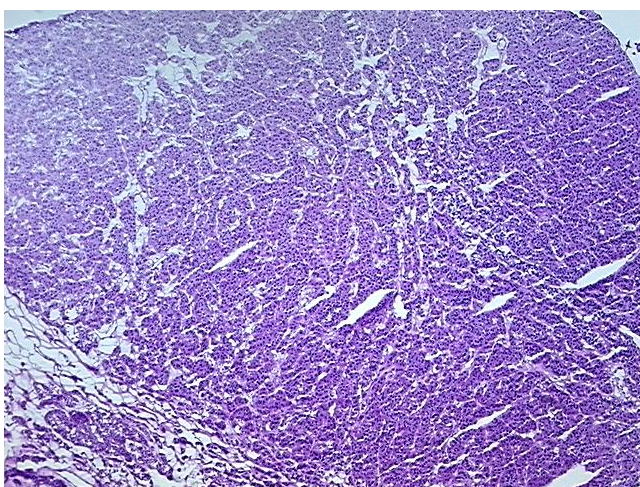
#### Product data:

|   |                                  |
|---|----------------------------------|
| Product Type:                                     | Frozen Sections                  |
| Disease State:                                    | Cancer                           |
| Diagnosis Category:                               | Thyroid Cancer                   |
| Tissue:   | Thyroid gland                    |
| Frozen Sample ID:                                 | FR0003ED68                       |
| Case ID:  | CI0000018215                     |
| Tissue of Origin:                                 | Thyroid gland                    |
| Site of Finding:                                  | Thyroid gland                    |
| Appearance:                                       | T                                |
| Sample Diagnosis (from Pathology Verification):   | Carcinoma of thyroid, follicular |
| Normal:   | 0%                               |
| Lesional:   | 0%                               |
| Tumor:  | 95%                              |
| Tumor Hypo/Acellular Stroma:                      | 5%                               |
| Tumor Hypercellular Stroma:                       | 0%                               |
| Necrosis:   | 0%                               |
| CASE Diagnosis (from medical center path report): | Carcinoma of thyroid, follicular |
| Age:  | 52                               |
| Gender:   | Female                           |
| Race:   | White or Caucasian               |
| Tumor Grade:                                      | Not Reported                     |

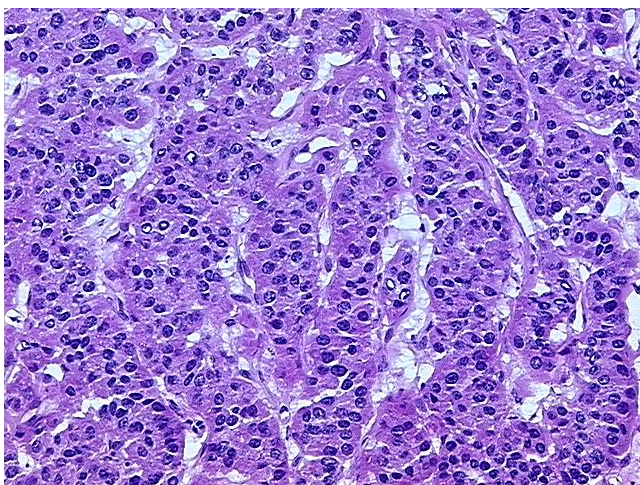


[View online »](#)

|                              |  |
|------------------------------|--|
| Minimum Stage Grouping:      | III  |
| T (Extent of Primary Tumor): | T3   |
| N (Lymph node metastasis):   | NX   |
| M (Distant metastasis):      | MX   |
| Storage:                     | Store frozen tissue sections at -80°C.   |
| Stability:                   | All frozen tissue sections are stable for 1 year from date of purchase if stored at -80°C without repeated freeze/thaws. |

**Product images:**

4x Image



20x Image